

## Spider Hand Bottle Sorting Machine For Irregular Bottle With High Speed

Our Product Introduction

for more products please visit us on tom-packs.com

### Basic Information

- Place of Origin: China
- Brand Name: TOM
- Certification: CE, ISO, CO
- Model Number: LPJ-ZZS
- Minimum Order Quantity: 1 Set
- Price: Negotiable
- Packaging Details: Sea Worthy Packing
- Delivery Time: 40 working days
- Payment Terms: L/C, T/T
- Supply Ability: 10 sets per month



### Product Specification

- Material: SUS 304
- Speed: 6000BPH
- Machine Size: L\*W\*H =2400\*1400\*2200mm
- Spider Hand: 1-3
- Maximum Load (kg): 3kg
- Protection Level: IP65
- Noise Level: <80dB
- Highlight: Spider Hand Bottle Sorting Machine, Bottle Sorting Machine High Speed, Irregular Bottle Sorting Machine



### More Images



## Spider Hand Bottle Sorting Machine For Irregular Bottle with high speed Empty Bottle Feeder



### Summarize

Used for empty bucket storage, manually pouring empty buckets into the hopper, which automatically delivers buckets according to the needs of the automatic loading machine. The capacity of the loading bin can accommodate 850(500ml) irregularly arranged empty barrels, meeting the buffering needs of the loading system for continuous operation for 15 minutes. When the sensor in the bottle sorting machine detects that the set number of bottles has been reached, the bottle loading machine stops working. Used in conjunction with a bottle sorting machine, it automatically loads the bucket without bottles and stops automatically with bottles, achieving automated control. Continuous variable speed can be achieved according to production needs. The main components of the machine are made of high-quality 304 stainless steel.

### Visual Detection System



### Main function

According to the set program, the automatic barrel loading machine

transports empty barrels from the conveyor belt to the lying empty barrels through image recognition technology. The empty barrels are correctly grasped and placed vertically on the finished product conveyor belt in the specified direction, ensuring that the empty barrel mouth is facing the same direction (opposite to the direction of transportation), and then transported by the finished product conveying system to the entrance of the filling machine.

The anti mixing bucket recognition function can automatically remove anti mixing buckets in the event of anti mixing buckets. Different varieties and barrel types can be switched with just one touch on the touch screen, without the need for manual adjustment.

## **Spider Hand Bucket Host**

### **Machine summarize**

According to the set program, the automatic barrel loading machine transports empty barrels from the conveyor belt to the lying empty barrels through image recognition technology. The empty barrels are correctly grasped and placed vertically on the finished product conveyor belt in the specified direction, ensuring that the empty barrel mouth is facing the same direction (opposite to the direction of transportation), and then transported by the finished product conveying system to the entrance of the filling machine.

The rack and its components mainly consist of the rack frame, electrical control panel, movable safety door, glass side door, operation panel, side sealing plate and other components. The rack frame is composed of carbon steel welded components and bolted connections. The electrical control cabinet is welded with carbon steel material, and after sealing, the protection level is required to reach IP55. It is mainly used to install electrical components such as frequency converters and plugs. The activity safety door is made of transparent PC board material, and the internal situation of the machine can be clearly seen during operation; The activity safety door is equipped with a safety protection device to ensure that when the door is opened, the machine will immediately stop running and protect personnel safety! When the door is not fully closed, the machine cannot run, avoiding rabbit misoperation and ensuring personal safety. Glass side doors can prevent personnel from entering the interior of the machine during operation.

### **Spider Hand Technical Parameters**

Working space(D×H)mm	1300×370
Average load (kg)	1.0
Maximum load (kg)	3.0
Repetitive positioning accuracy (mm)	±0.1

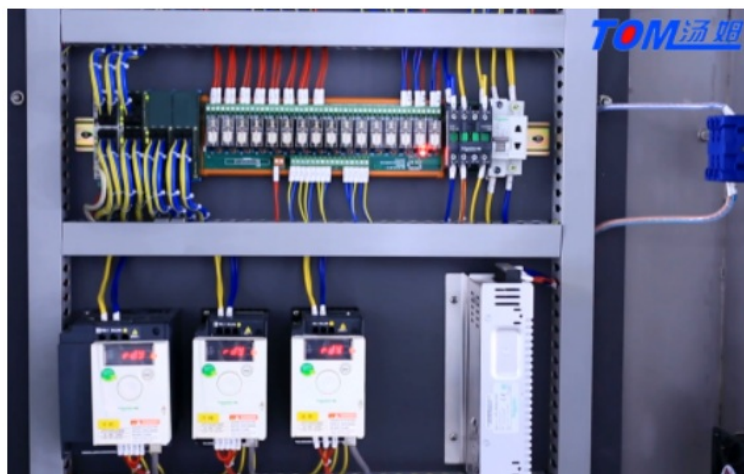
Maximum speed (m/s)	6
Maximum acceleration (m/s <sup>2</sup> )	80
Beat 「mm」	25/305/25
Beat time 「s」	0.4~0.8
Speed "times/minute"	75~150
Noise level	<70dB
Protection level	IP56
shock	4.9m/s <sup>2</sup> ,0.5g
Rated power	9.0kw
weight	60kg
Power input	380VAC, three-phase five wire system, zero ground separation, wire diameter ≥ 2.5mm <sup>2</sup>
Gas input	0.5~0.6MPA
Spider hand Qty.	2 sets
Capacity	6000 bottles/hour
Machine size	L*W*H =2400*1400*2200mm

### Applications:

Widely used in beverage, edible oil, daily chemical, pharmaceutical, and other industries for bottle sorting, arranging, and feeding into filling and packaging lines.

#### Electrical parts:

The electrical part are in top side of machine, can prevent water and material inside it, safety and environmental.



#### Packaging & Shipping:

1. the machine is packed by non-fumigation wooden case, and for keeping the wooden case more secure, we inserted the iron support inside wooden case, makes it suitable for long-term sea delivery.



## Factory Tour



Case display area



Company gate



Panorama of the company



Case display area



**Jiangsu TOM Intelligent Equipment Co., Ltd.,**



+86 13306111001



tech@cn-tom.com



tom-packs.com

No.99, Rulin Town, Jintan District, Changzhou City, Jiangsu Province, China.