



## Tracking Type 100ml-1L Viscosity Liquid Filling And Capping Machine For Bottle

Our Product Introduction

for more products please visit us on [tom-packs.com](http://tom-packs.com)

### Basic Information

- Place of Origin: China
- Brand Name: TOM
- Certification: CE, ISO, CO
- Model Number: GZH-12DA1-6FXB
- Minimum Order Quantity: 1 Set
- Price: Negotiable
- Packaging Details: Sea Worthy Packing
- Delivery Time: 40 working days
- Payment Terms: L/C, T/T
- Supply Ability: 10 sets per month



### Product Specification

- Material: SUS 304
- Filling Volume: 50ML-1000ML
- Speed: 6000BPH
- Filling Type: By Volume
- Machine Size: 3000mm×2100mm×2500mm
- Filling Head: 12
- Filling Product: Viscosity Liquid
- Filling Accuracy: +/-2g
- Capping Head: 6



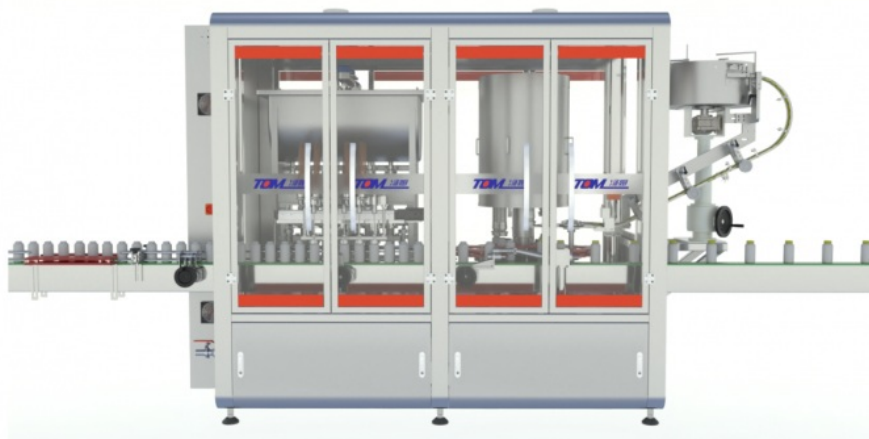
## Summarize

The intelligent piston type tracking filling rotary cap is our company's latest generation optimized and improved piston type filling rotary integrated machine, which automatically completes a series of operations such as conveying, bottle counting, positioning, filling and filling, and bottle discharge. Suitable for filling water, emulsion, and high viscosity materials. The whole machine adopts a linear arrangement structure, and the filling principle is based on piston cylinder metering, achieving high-precision filling measurement. The product completes the capping action during movement, which is different from conventional capping machines that require a pause during capping, as it can cause the material to shake out of the bottle mouth and contaminate the bottle body. The machine does not stop rotating the cap, effectively avoiding shaking and keeping the bottle clean. This machine adopts programmable PLC control and a touch based human-machine interface, making the operation of the whole machine simple and intuitive. Dose and action adjustments are more convenient and efficient. Arc shaped outer frame, easy to clean and maintain.

## Major Parameter

No.	Item	summarize	
	Capacity	Filling and capping specification	Speed
		100ml	100 bottle/min
		250ml	90 bottle/min
		330ml	85 bottle/min
		500ml	75 bottle/min
		800ml	70 bottle/min
		1000ml	60 bottle/min
	Filling head	12 heads	
	Capping head	6 heads	
	Filling product	EC, SC, SL	
	Filling range	50ml-1000ml	
	Filling accuracy	±2g	
	Bottle mouth	≥φ21mm	

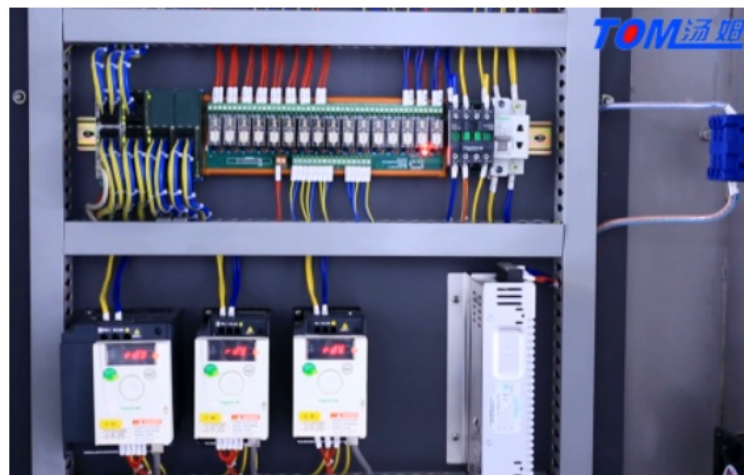
Machine's picture:



The main components of this machine are all international famous brands. The human-machine interface and microcomputer controller (PLC) adopt the Japanese Panasonic brand. The operation is simple and the operation is reliable. The servo control system adopts Taiwan TECO and has been used by the company for nearly 10 years. Has considerable experience, stable quality, wide application environment and low maintenance rate. The main power inverter adopts the French Schneider brand

#### Electrical parts:

The electrical part are in top side of machine, can prevent water and material inside it, safety and environmental.



#### Packaging & Shipping:

1. the machine is packed by non-fumigation wooden case, and for keeping the wooden case more secure, we inserted the iron support inside wooden case, makes it suitable for long-term sea delivery.



Company Overview--Jiangsu Tom Group



Tom "The Little White House"

Jiangsu Tom Group factory covers an area of 150 acres and has a construction area of 120,558 square meters. It has 710 employees, 2 doctoral students, 30 master students, and 358 undergraduates. It has obtained ISO9001 quality system. Certification, ISO14001 Environmental Management System Certification, OHSAS18001 Occupational Health and Safety System Certification, CE Certification, Jiangsu Province Specialized Specialized New "Little Giant" Enterprise, Changzhou Specialized Specialized New Small and Medium Enterprise, 125 National Utility Patents and 26 National Inventions patent. Over the past 24 years, after the hard work of Tom people, Tom Group has continued to innovate and develop, keeping pace with the times, providing generations of advanced intelligent packaging equipment for more than 3,300 chemical companies, and building Industry 4.0 intelligent factories for customers; Provide automated three-dimensional warehouse; create smart factory production data acquisition and execution system (MES) for customers.



**Jiangsu TOM Intelligent Equipment Co., Ltd.,**

+86 13306111001

tech@cn-tom.com

tom-packs.com

No.99, Rulin Town, Jintan District, Changzhou City, Jiangsu Province, China.