



## Carbon Steel Semi Automatic Capping Machine 8-10 Drums / Minute 5-25L

Our Product Introduction

for more products please visit us on [tom-packs.com](http://tom-packs.com)

### Basic Information

- Place of Origin: China
- Brand Name: TOM
- Certification: CE, ISO, CO
- Model Number: XG-1
- Minimum Order Quantity: 1 Set
- Price: Negotiable
- Packaging Details: Sea Worthy Packing
- Delivery Time: 30 working days
- Payment Terms: L/C, T/T
- Supply Ability: 5 sets per month



### Product Specification

- Materials: Carbon Steel
- Machine Weight: 200kg
- Machine Size: 500\*1700\*900MM
- Suitable Cap: Suitable Cap
- Equipped Power: AC220V±10 50HZ
- Equipped Air Source: 0.6MPa Clean And Dry Air Source
- Highlight: Carbon Steel semi automatic capping machine,  
10 Drums / Minute semi automatic capping machine  
, 25L semi automatic capper

## XG-1 Semi-Automatic Cap Capping Machine (Put Cap On The Drum By Manual)

### Product advantages

This machine is special designed for middle and wide mouth barrel scraping and capping. It can be widely used in 10-30L round drum automatic loading cap and capping in coating, petrochemical and other industries.

### Technical Parameter:

NO.	Item	Parameter
	Outside dimension(L×W×H)	500*1700*900MM
	Machine's weight	600KG
	Equipped power	AC220V±10 50HZ
	Equipped air source	0.6MPa clean and dry air source
	Air consumption	40L/min
	Power supply	3kw
	Capacity	8-10drums/minute
	Suitable cap	5-25L wide mouth cap
	Packing range	5-25L

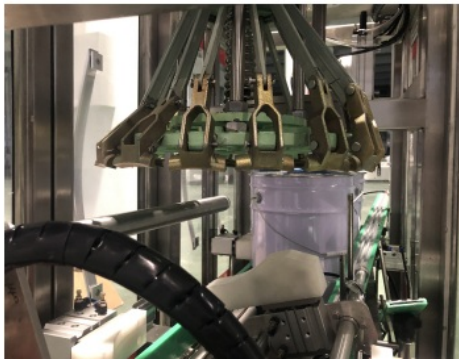
Machine's picture:



Suitable Drum:



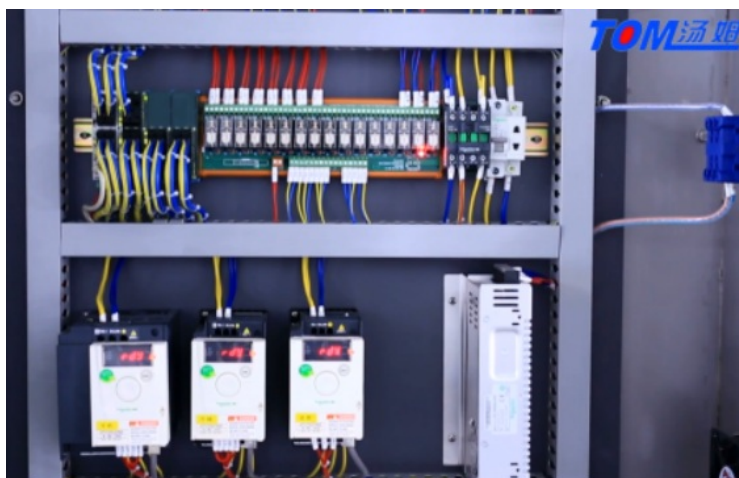
Equipment control technical point:



1. Put cap on the drum by manual
2. The cap pressing device uses a continuous capping machine
3. Adopts inclined roller conveyor, and there is an exhaust device on the side.
4. Height can be adjusted by handwheel. To adapt to different barrel types;
5. The conveying process running stable before capping and make sure no splashing.

#### Electrical parts:

The electrical part are in top side of machine, can prevent water and material inside it, safety and environmental.



#### Packaging & Shipping:

1. the machine is packed by non-fumigation wooden case, and for keeping the wooden case more secure, we inserted the iron support inside wooden case, makes it suitable for long-term sea delivery.



#### Company Overview--Jiangsu Tom Group

Tom "The Little White House"

Jiangsu Tom Group factory covers an area of 150 acres and has a construction area of 120,558 square meters. It has 710 employees, 2 doctoral students, 30 master students, and 358 undergraduates. It has obtained ISO9001 quality system. Certification, ISO14001 Environmental Management System Certification, OHSAS18001 Occupational Health and Safety System Certification, CE Certification, Jiangsu Province Specialized Specialized New "Little Giant" Enterprise, Changzhou Specialized Specialized New Small and Medium Enterprise, 125 National Utility Patents and 26 National Inventions patent. Over the past 24 years, after the hard work of Tom people, Tom Group has continued to innovate and develop, keeping pace with the times, providing generations of advanced intelligent packaging equipment for more than 3,300 chemical companies, and building Industry 4.0 intelligent factories for customers; Provide automated three-dimensional warehouse; create smart factory production data acquisition and execution system (MES) for customers.





Company covers an area of 150 mu



Office building



New factory processing center



Old factory processing center



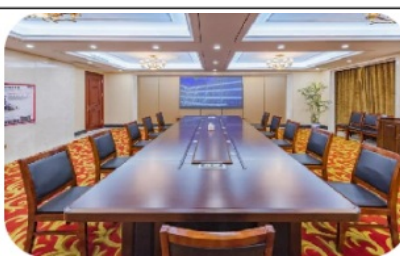
Assembly workshop



After-sales service big data service center



Large meeting room



Reception room



Packaging material display area



Model workshop



Jiangsu TOM Intelligent Equipment Co., Ltd.,



+86 13306111001



tech@cn-tom.com



tom-packs.com

No.99, Rulin Town, Jintan District, Changzhou City, Jiangsu Province, China.