

Fully Automatic PLC Controlled Powder Packing Machine For Bottles

Our Product Introduction

for more products please visit us on tom-packs.com

Basic Information

- Place of Origin: China
- Brand Name: TOM
- Certification: CE, ISO, CO
- Model Number: FJ-1BP
- Minimum Order Quantity: 1 Set
- Price: Negotiable
- Packaging Details: Sea Worthy Packing
- Delivery Time: 30 working days
- Payment Terms: L/C, T/T
- Supply Ability: 10 sets per month



Product Specification

- Material: SUS 304
- Filling Volume: 100-500g
- Speed: 500 Bottle Per Hour
- Filling Type: By Screw
- Machine Size: 2000mm×800mm×2100mm
- Filling Head: 1
- Filling Product: Powder And Granule
- Filling Accuracy: +/-5g
- Highlight: **PLC Controlled Powder Packing Machine, 500BPH Powder Packing Machine, 500g powder packaging machine**



FJ-1BP Fully Automatic PLC Controlled powder packing machine for Bottles

Major characteristics

This type of packing machine is automatic controlled by PLC. Movement reliability, servo motor, touches screen, easy operation, and adjustable speeds. This type of machine is suited for the ration packaging of small particulates, petty powder, and super-mini-power.

The parts, which come into contact with filling material, are made of stainless steel conforming to GMP standard.

Technical parameters

No.	Items	Performance
01	Power supply	380V±10%or design according client requirement
02	Power	3kw
03	Air source	0.6Mpa clean and stable compressed air
04	bottle	design according customer's bottle and cap
05	filling head	1
06	Filling product	Powder, granular
07	Filling range	100g-500g
08	Filling accuracy	± 5g
9	Production capacity	500 bottles per hour
10	Machine weight	about 1200Kg
11	Machine dimension (L×W×H)	2000mm (L)*800mm (W)*2100mm (H)

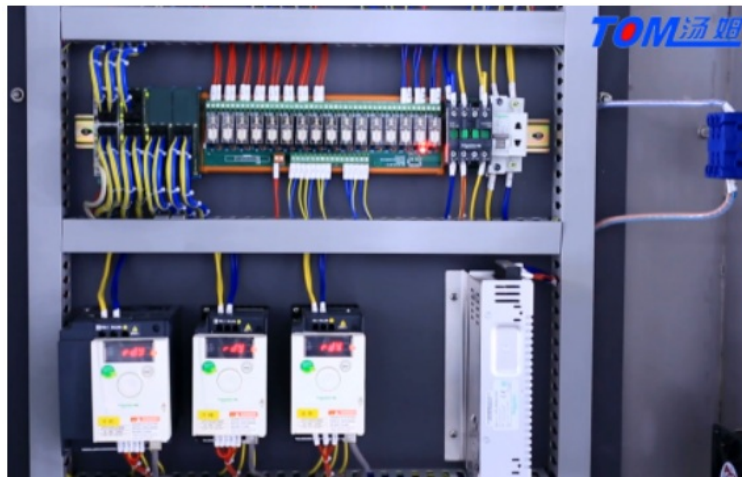
Machine's picture:



The main components of this machine are all international famous brands. The human-machine interface and microcomputer controller (PLC) adopt the Japanese Panasonic brand. The operation is simple and the operation is reliable. The servo control system adopts Taiwan TECO and has been used by the company for nearly 10 years. Has considerable experience, stable quality, wide application environment and low maintenance rate. The main power inverter adopts the French Schneider brand

Electrical parts:

The electrical part are in top side of machine, can prevent water and material inside it, safety and environmental.



Packaging & Shipping:

1. the machine is packed by non-fumigation wooden case, and for keeping the wooden case more secure, we inserted the iron support inside wooden case, makes it suitable for long-term sea delivery.



Company Overview--Jiangsu Tom Group



Tom "The Little White House"

Jiangsu Tom Group factory covers an area of 150 acres and has a construction area of 120,558 square meters. It has 710 employees, 2 doctoral students, 30 master students, and 358 undergraduates. It has obtained ISO9001 quality system. Certification, ISO14001 Environmental Management System Certification, OHSAS18001 Occupational Health and Safety System Certification, CE Certification, Jiangsu Province Specialized Specialized New "Little Giant" Enterprise, Changzhou Specialized Specialized New Small and Medium Enterprise, 125 National Utility Patents and 26 National Inventions patent. Over the past 24 years, after the hard work of Tom people, Tom Group has continued to innovate and develop, keeping pace with the times, providing generations of advanced intelligent packaging equipment for more than 3,300 chemical companies, and building Industry 4.0 intelligent factories for customers; Provide automated three-dimensional warehouse; create smart factory production data acquisition and execution system (MES) for customers.

No.99, Rulin Town, Jintan District, Changzhou City, Jiangsu Province, China.