

## Two Head Semi Auto Weighing Filling Machine 5-30KG

Our Product Introduction

for more products please visit us on tom-packs.com

### Basic Information

- Place of Origin: China
- Brand Name: TOM
- Certification: CE, ISO, CO
- Model Number: DGP-CZ-2A
- Minimum Order Quantity: 1 Set
- Price: Negotiable
- Packaging Details: Plywood case
- Delivery Time: 30 working days
- Payment Terms: L/C, T/T, Western Union
- Supply Ability: 20 sets per month



### Product Specification

- Material: Stainless Steel 304
- Filling Volume: 5-30KG
- Speed: 700 Bottle Per Hour
- Filling Type: By Weigh
- Application: For EC SC SL...
- Model: DGP-CZ-2A
- Liquid: Liquid
- Highlight: Two Head semi auto weighing filling machine, 30KG semi auto weighing filling machine, 5KG weigh filler packaging machine



### More Images



## DGP-CZ-2A Semi-automatic Two Filling Head weighing filler for 5-30KG

### Major characteristics:

It is a semi-automatic filling machine with filling by weighing, with filling range from 5-30KG, suitable for filling agrochemical, daily chemicals, water aqua, lubricant, etc. and is ideal packing machine in industries of petrochemical, fine chemicals, etc.

### Features

It is PLC + HMI controlled, with quick& slow filling mode, and when filling begin, the quick filling valve is on, and start to fill, and when it reached setting

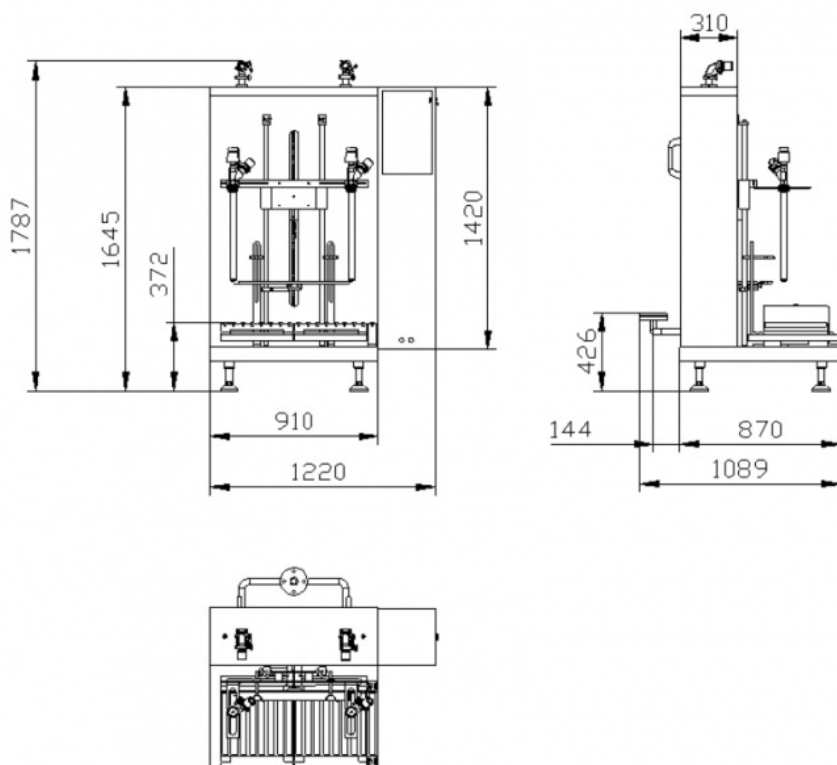
volume for quick filling, the slow filling mode will begin to work until it reached to the set volume for slow filling.

With each filling nozzle controlled by weighing sensor and its feeding system, can make fine adjustment on filling volume of each filling nozzle.

Automatic drip collecting tray will be actuated after filling is over.

### Technical parameters

No.	Items	Performance
01	Outer dimension (L×W×H)	1220mm×1800mm×1700mm
02	Machine Weight	200kg
03	Bottle neck	≥Φ40mm
04	Maximum Container Size	400mm×350mm×600mm
05	Power supply	AC220,1P, /AC380V±10%;3P, 50Hz/60Hz
06	Power	0.75kw
07	Filling range	5-30L
08	Filling error	±20g (20L)
09	Number of filling nozzles	2filling heads
10	Production capacity	700 bottles/hour
11	Relative humidity	<95%



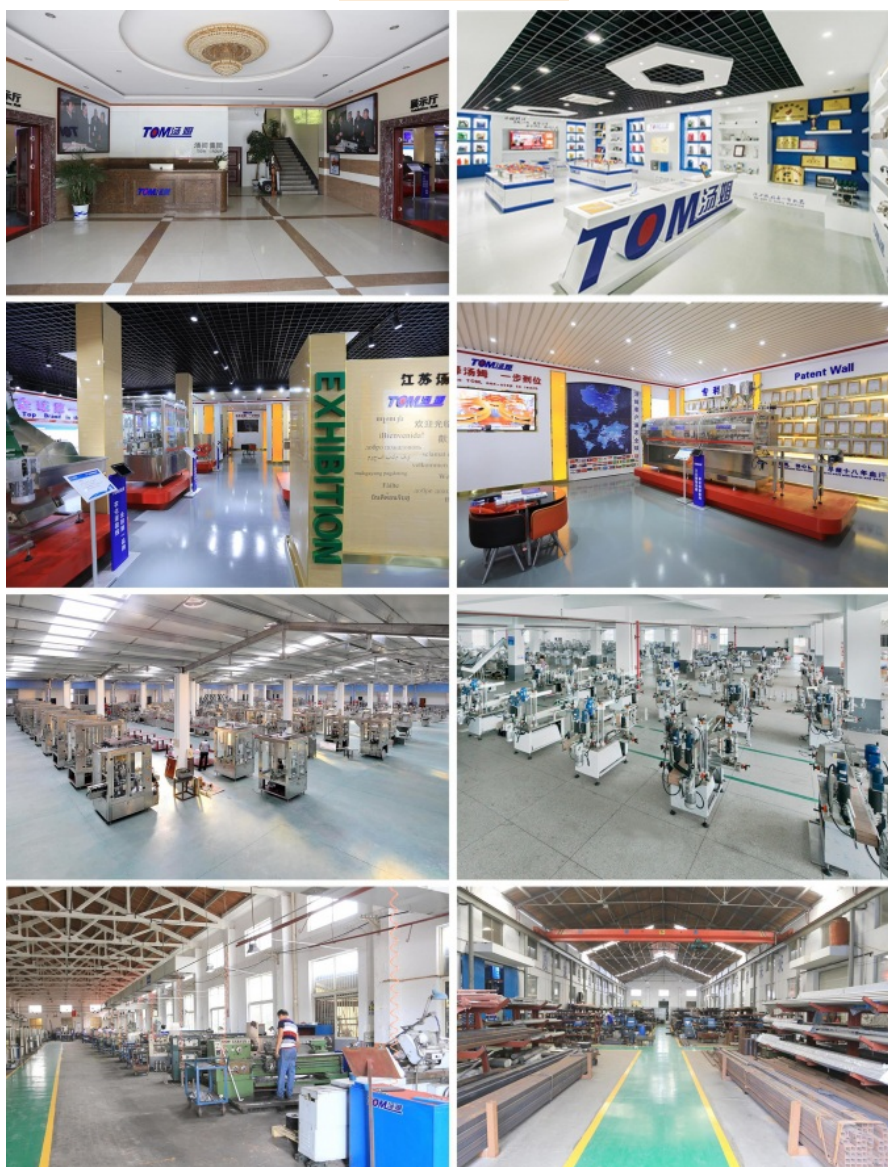


Jiangsu Tom Group is an enterprise specializing in the production of pesticide / veterinary medicine, fertilizer and chemical intelligent equipment. The factory covers an area of 150 acres and has a construction area of 120,558 square meters. It has 710 employees, 2 doctoral students, 30 master students, and 358 undergraduates. It has obtained ISO9001 quality system. Certification, ISO14001 Environmental Management System Certification, OHSAS18001 Occupational Health and Safety System Certification, CE Certification, Jiangsu Province Specialized Specialized New "Little Giant" Enterprise, Changzhou Specialized Specialized New Small and Medium Enterprise, 125 National Utility Patents and 26 National Inventions patent. Over the past 24 years, after the hard work of Tom people, Tom Group has continued to innovate and develop, keeping pace with the times, providing generations of advanced intelligent packaging equipment for more than 3,300 pesticide / veterinary medicine, fertilizer and chemical companies, and building Industry 4.0 intelligent factories for customers; Provide automated three-dimensional warehouse; create smart factory production data acquisition and execution system (MES) for customers.

**Jiangsu Tom is a national high-tech enterprise, an enterprise that has obtained the National Small and Medium Enterprise Venture Fund, a member enterprise of the World Trade Center, a member enterprise of the National and Provincial Daily Chemical Industry Association, a "little giant" enterprise in Jiangsu Province, and a professional and special innovation in Changzhou. Small and medium-sized enterprises, Changzhou service manufacturing demonstration enterprises, Changzhou Industrial Design Center, Jiangsu Province Certified Enterprise Technology Center, Jiangsu Province Intelligent Packaging Complete Equipment Engineering Technology Research Center, and Premier Wen visited Tom's Laboratory in 2009. So far, I have The company has more**

than 3,000 domestic daily chemical customers and more than 300 foreign daily chemical customers. Its excellent performance and perfect after-sales service system have won unanimous praise from users. Syngenta, Bayer, BASF, Luxi Chemical, Kim Jong Il, Stanley, nopson, Lear, Shurong, new Chaoyang, Hans, Fuhua, Huaying, Jiangshan, Huifeng, Kesheng, Fengshan, Jiannong, Yanhua Yongle, Huaxing, red sun, Guoguang, Zhengbang, sublimation Bayer, Yingtai, Wynca, Qizhou, Shandong Zhongnong, binnong, Qiaochang, Shengbang LVYE, Runfeng, LvBa, cosekinon, tianbang, Jiner Fengbang, Hansheng, hailier, Guangxi Institute of chemical industry, Tianyuan, Tianjin Huayu, Hebei Weiyuan, Yinnong, Lingang chemical and other well-known pesticide / veterinary medicine and fertilizer enterprises at home and abroad have become Tom's strategic partners and other well-known pesticide/veterinary medicine and fertilizer companies at home and abroad have become Tom's strategic partners.

The Photo Of Our Company



**TOM 汤姆** Jiangsu TOM Intelligent Equipment Co., Ltd.,

+86 13306111001    tech@cn-tom.com    tom-packs.com

No.99, Rulin Town, Jintan District, Changzhou City, Jiangsu Province, China.