

## SUS 304 PLC Controlled Automatic Stand Up Bag Filling And Capping Machine

Our Product Introduction

for more products please visit us on tom-packs.com

### Basic Information

- Place of Origin: China
- Brand Name: TOM
- Certification: ISO9001:2000, ISO14001, OHSAS18001, CE, CO
- Model Number: YDGP-4-1
- Minimum Order Quantity: 1 set
- Price: Negotiable
- Packaging Details: Sea Worthy Packing
- Delivery Time: 40 working days for single machine
- Payment Terms: T/T, L/C
- Supply Ability: 5 sets per month



### Product Specification

- Control: By HMI And PLC
- Capacity: 1000bph
- Guarantee: 1 Year
- After-sales Service Provided: Engineers Available To Service Machinery Overseas
- Voltage: 220V/380V
- Filling Range: 100ml-500ml
- Automatic Grade: Automatic
- Filling Liquid: Softer
- Highlight: Bag filling and capping machine, Automatic filling and capping machine, SUS304 monoblock machine



### More Images



## YDGP-4-1 SUS 304 PLC Controlled Automatic Stand Up Bag Filling And Capping Machine

### Major characteristics:

This model is suitable for flat bags with hard mouths, pillow bags and stand-up pouches filling and capping. It can be filled with various forms of liquid and paste. The machine is stable in operation and wide in application range, which provides another packaging form for bag.

This machine adopts programmable logic control (PLC) computer control, frequency conversion speed regulation, high degree of automation, perfect bag feeding device, convenient specification replacement, and can be added at any time without cover. The motor control components used in this machine are all selected from international famous brands, and the material contact parts are made of high-quality stainless steel materials. It is an ideal packaging equipment for daily chemical, lubricating grease, medicine, pesticide, fertilizer, food and other industries.

### Technical Parameter:

No.	Items	Performance
01	Mainframe dimensions	2000mm × 1800mm × 2000mm
02	Weight	:about 1200kg
03	Bag mouth inner diameter	≥ φ18mm (≤ φ18 bottle can be customized)
04	Power supply	AC380V; 50HZ
05	Machine power	3.5kw
06	Filling amount	100ml-500ml
07	Filling error	≤ ±0.5%
08	Need to prepare gas source	0.5-0.65MPa clean dry air source
09	Air consumption	220 L/ min
10	Number of filling heads	4 heads
11	number of capping	1 head
12	Water line cover height	950mm ± 50mm
13	The height of the bottom of the man-machine interface	about 1400mm from the ground
13	Production capacity	about 1200 bags / hour(for 500ml, real speed depends on the bag mouth diameter and filling materials)

### Machine Picture:



### Partial introduce:

**Bad feeding part:** hang the bags on this device by manual, bag sending device push the roll to finished bag feeding, interlock control with main machine's motor.



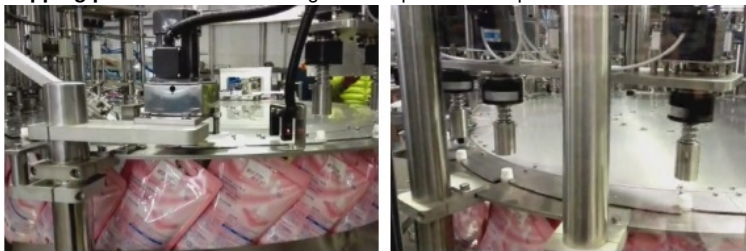
**Filling part:**adopts piston filling way, each station corresponds to the corresponding bag mouth for filling



**Cap feeding part:** automatic cap feeding and sorting, cap sorter located on the top of the main machine, feeding caps through the cap falling groove.



**Capping part:** external scale magnetic torque clutch cap



### Packaging & Shipping

1. the machine is packed by non-fumigation wooden case, and for keeping the wooden case more secure, we inserted the iron support inside wooden case, makes it suitable for long-term sea delivery.



Ware house for finished packed machines:





Loading machines into container:  
We have a professional logistics team responsible for shipping



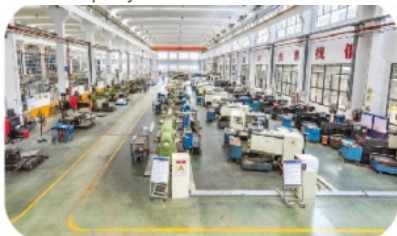
#### Company Overview--Jiangsu Tom Group



Company real scene



Company covers an area of 150 m<sup>2</sup> office building



New factory processing center



Old factory processing center



Assembly workshop



After-sales service big data service center

**TOM 汤姆** Jiangsu TOM Intelligent Equipment Co., Ltd.,

 +86 13306111001     tech@cn-tom.com     tom-packs.com

No.99, Rulin Town, Jintan District, Changzhou City, Jiangsu Province, China.