

UTZ-2000Z 2M Stainless Steel Packing Platform For Manual Carton Packing

Our Product Introduction

for more products please visit us on tom-packs.com

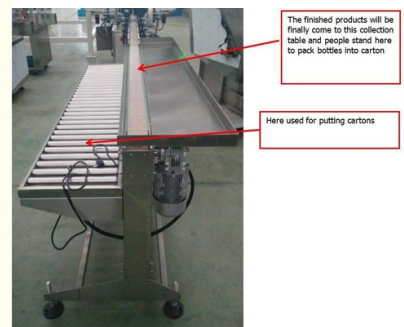
Basic Information

- Place of Origin: China
- Brand Name: TOM
- Certification: CE/ISO9001
- Model Number: UTZ-2000Z
- Minimum Order Quantity: 1 set
- Price: Negotiable
- Packaging Details: Sea Worthy Packing
- Delivery Time: 10 Working Days
- Payment Terms: L/C, T/T
- Supply Ability: 20 sets per month



Product Specification

- Automatic Grade: Semi-Automatic
- Warranty: 1 Year
- Voltage: 220/380V
- In-feed Direction: From Left To Right
- Material: SUS 304
- Length: 2M
- Highlight: **Manual Carton Packing Platform, 2M Stainless Steel Packing Platform**



UTZ-2000Z 2M Stainless Steel Packing Platform For Manual Carton Packing

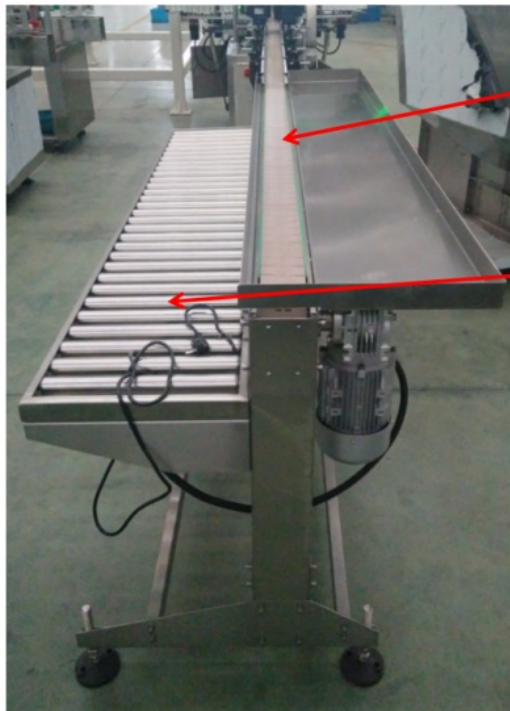
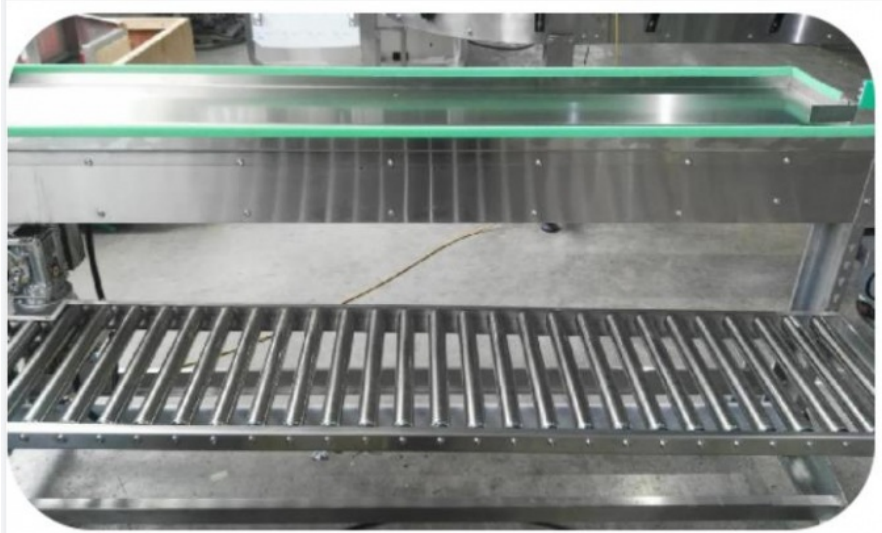
summarize:

- (1) The platform with big buffering area which is not block the bottle, the production line is not affected.
- (2) The packing is convenient and easy to operate. After packing, the box can enter the sealing machine smoothly.
- (3) SUS304 stainless steel, reliable and guaranteed quality.
- (4) The connecting part with the conveyor is fixed with stainless steel plate, which has strong stability.

Major Parameters:

NO.	Name	Parameter
1	Machines size(L×W×H)	2000mm×800mm×900mm
2	Machine's weight	About 120kg
3	Suitable bottle	1-5L square bottle/round bottle
4	Equipped with power supply	AC220V 50HZ;0.37KW

Machine's Main picture:



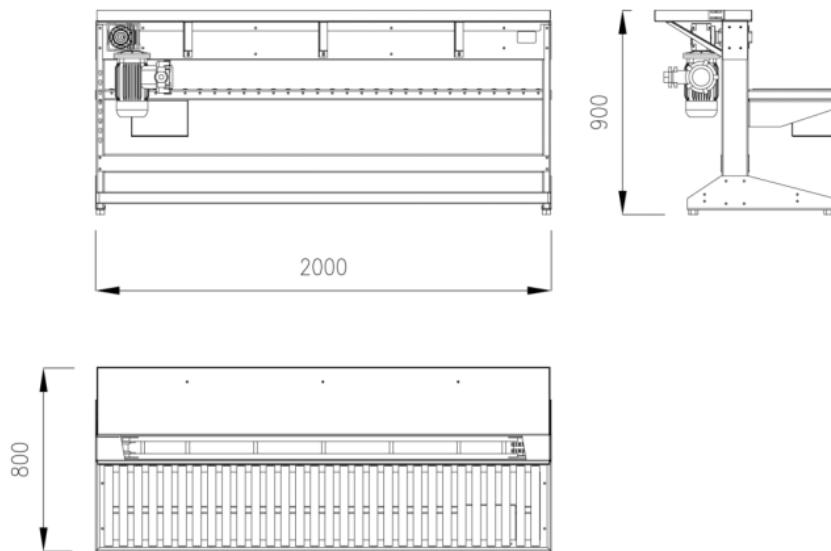
The finished products will be finally come to this collection table and people stand here to pack bottles into carton

Here used for putting cartons

Product advantages

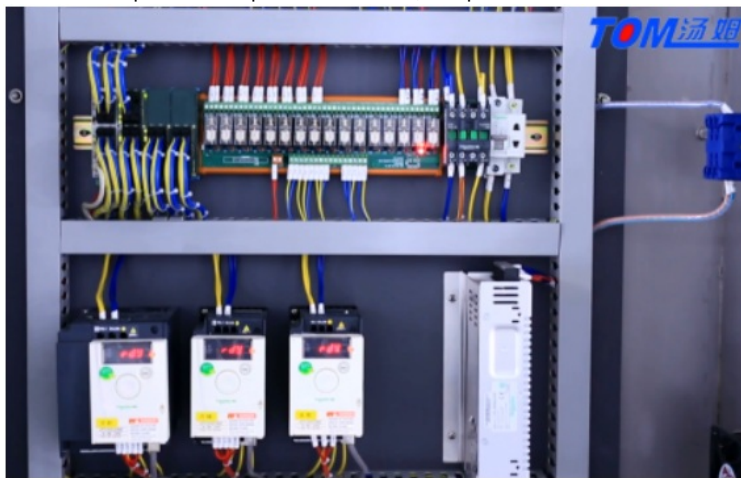
1. Manually open the carton and put it on the carton roller in place.
2. The bottles are transported to the packing platform and pack it into carton manually.
3. After manual packing, send it to the automatic sealing machine for sealing.

Size chart:



Electrical parts:

The electrical part are in top side of machine, can prevent water and material inside it, safety and environmental.



Packaging & shipping:

All the machines are wrapped with film, and then fixed with carbon steel , outside use plywood case packed which totally suitable long distance sea shipping.



Company Overview--Jiangsu Tom Group

Tom "The Little White House"

Jiangsu Tom Group factory covers an area of 150 acres and has a construction area of 120,558 square meters. It has 710 employees, 2 doctoral students, 30 master students, and 358 undergraduates. It has obtained ISO9001 quality system. Certification, ISO14001 Environmental Management System Certification, OHSAS18001 Occupational Health and Safety System Certification, CE Certification, Jiangsu Province Specialized Specialized New "Little Giant" Enterprise, Changzhou Specialized Specialized New Small and Medium Enterprise, 125 National Utility Patents and 26 National Inventions patent. Over the past 24 years, after the hard work of Tom people, Tom Group has continued to innovate and develop, keeping pace with the times, providing generations of advanced intelligent packaging equipment for more than 3,300 chemical companies, and building Industry 4.0 intelligent factories for customers; Provide automated three-dimensional warehouse; create smart factory production data acquisition and execution system (MES) for customers.



Company covers an area of 150 mu



Office building



New factory processing center



Old factory processing center



Assembly workshop



After-sales service big data service center



Large meeting room



Reception room



Packaging material display area



Model workshop

 +86 13306111001  tech@cn-tom.com  tom-packs.com

No.99, Rulin Town, Jintan District, Changzhou City, Jiangsu Province, China.