

## Carbon Steel Chemical Packaging Machine With Painting Automatic Carton Opener

Our Product Introduction

for more products please visit us on tom-packs.com

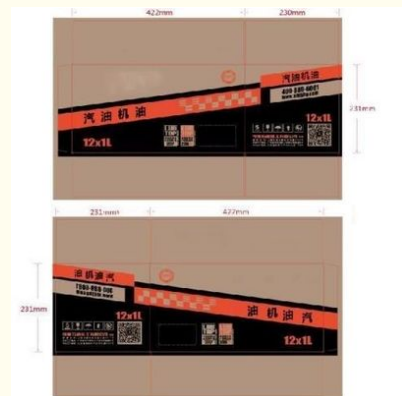
### Basic Information

- Place of Origin: China
- Brand Name: TOM
- Certification: CE/ISO9001
- Model Number: KLJ-40D
- Minimum Order Quantity: 1 set
- Price: Negotiable
- Packaging Details: Sea Worthy Packing
- Delivery Time: 30 Working Days
- Payment Terms: L/C, T/T
- Supply Ability: 30 sets per month



### Product Specification

- Automatic Grade: Automatic
- Warranty: 1 Year
- Voltage: 220/380V
- Materials: Carbon Steel
- Capacity: 10-12 Cartons/minute
- In-feed Direction: From Left To Right
- Highlight: Carbon Steel Chemical Packaging Machine, 380V Chemical Packaging Machine, 220V automatic carton opener



## KLJ-40D Carbon Steel With Painting Automatic Carton Opening Machine

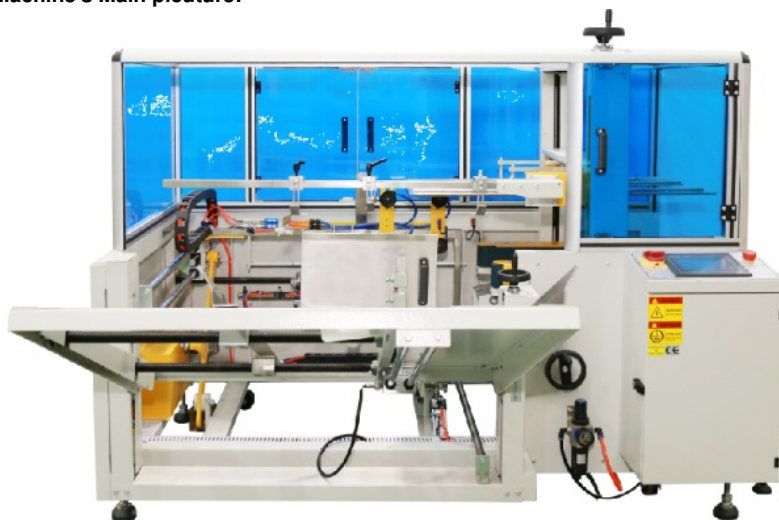
### summarize:

Automatically complete the carton opening, forming, and bending of the lower bottom flap. At the same time, the lower part of the tape is adhered, and the carton board is erected to help stabilize the transportation. The 90-degree carton board storage bin is suitable for different quality cartons and change different box shape is fast.

### Major Parameters:

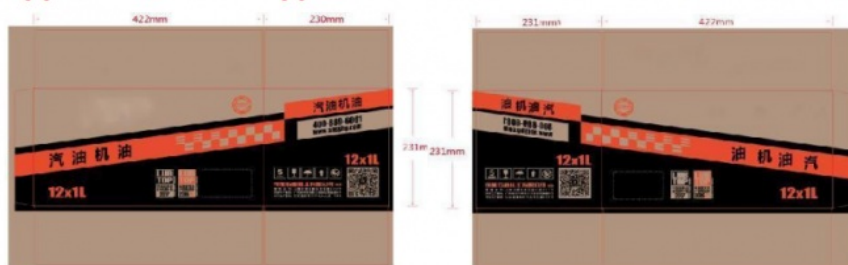
No.	Item	parameter
1	Mainframe dimensions (L*W*H)	2000*1950*1500MM
2	Equipment weight (load)	450KG
3	Equipped with power	220V/380V 50/60HZ
4	Maximum power of the whole machine	3.5kw
5	Applicable carton	L:200-450 W:150-400 H:100-350mm
6	Equipped with air source	0.6MPa clean and stable air source
7	Air consumption	80L/min
8	speed	8-12cartons/minute
9	Tape size	48mm/60mm/75mm
10	Carton storage	80-100

### Machine's Main picture:



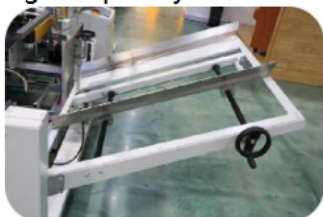
### Detailed introduce:

#### Applicable carton type

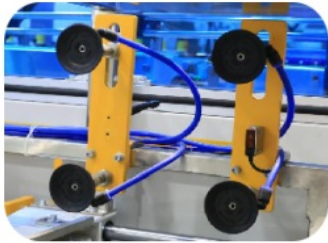


Suitable carton size:length200-450mm,width150-400 mm,height 100-350mm.

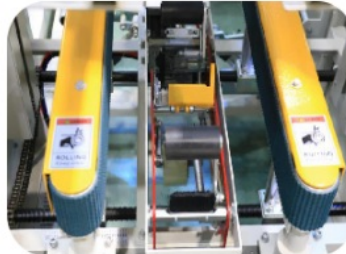
1,With vertical storage board way, only should placed the board neatly on the storage tank, and the cardboard can be replenished at any time without stopping the machine. The frame is stable and durable, and the temporary storage capacity of the carton reaches 1000mm.(about 80-100pcs)



2,In order to accurately grasp the carton, a multi-layer anti-static suction cup is selected, and the suction of the carton can reach 40-50KG, which is stable and durable. It is controlled by AirTac cylinder, which has high wear resistance and does not damage the carton. It is durable.

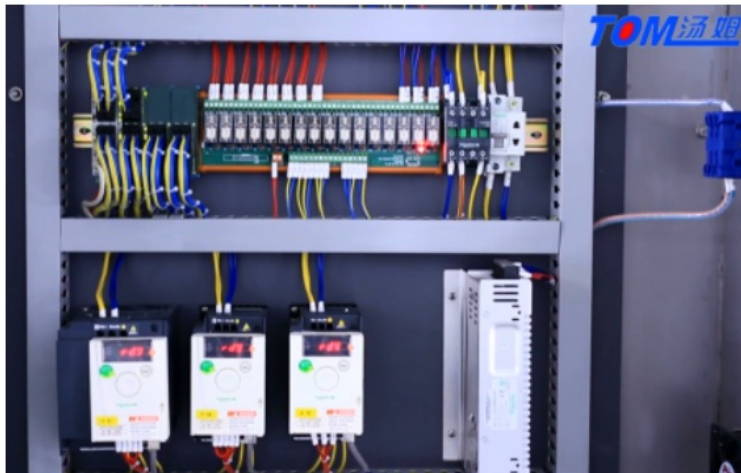


3.The pattern conveyor belt is used to increase the friction with the surface of the box to ensure the stable advancement of the box and the perfect sealing and high wear resistance.



#### Electrical parts:

The electrical part are in top side of machine, can prevent water and material inside it, safety and environmental.



#### Packaging & shipping:

All the machines are wrapped with film, and then fixed with carbon steel , outside use plywood case packed which totally suitable long distance sea shipping.



#### Company Overview--Jiangsu Tom Group

Tom "The Little White House"

Jiangsu Tom Group factory covers an area of 150 acres and has a construction area of 120,558 square meters. It has 710 employees, 2 doctoral students, 30 master students, and 358 undergraduates. It has obtained ISO9001 quality system. Certification, ISO14001 Environmental Management System Certification, OHSAS18001 Occupational Health and Safety System Certification, CE Certification, Jiangsu Province Specialized Specialized New "Little Giant" Enterprise, Changzhou Specialized Specialized New Small and Medium Enterprise, 125 National Utility Patents and 26 National Inventions patent. Over the past 24 years, after the hard work of Tom people, Tom Group has continued to innovate and develop, keeping pace with the times, providing generations of advanced intelligent packaging equipment for more than 3,300 chemical companies, and building Industry 4.0 intelligent factories for customers; Provide automated three-dimensional warehouse; create smart factory production data acquisition and execution system (MES) for customers.





Company covers an area of 150 mu



Office building



New factory processing center



Old factory processing center



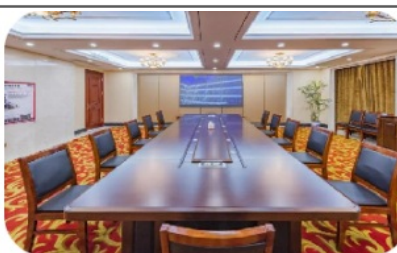
Assembly workshop



After-sales service big data service center



Large meeting room



Reception room



Packaging material display area



Model workshop

 +86 13306111001     tech@cn-tom.com     tom-packs.com

No.99, Rulin Town, Jintan District, Changzhou City, Jiangsu Province, China.