

Automatic Chemical Powder Packing Machine 15 Bags / Min Granule Pouch Packing Machine

Our Product Introduction

for more products please visit us on tom-packs.com

Basic Information

- Place of Origin: China
- Brand Name: TOM
- Certification: CE, ISO, CO
- Model Number: FJ-300GD
- Minimum Order Quantity: 1 Set
- Price: Negotiable
- Packaging Details: Sea Worthy Packing
- Delivery Time: 50 working days
- Payment Terms: L/C, T/T
- Supply Ability: 10 sets per month



Product Specification

- Filling Type: By Weight And Screw
- Application: For Liquid, Powder, Granule
- Model: FJ-300GD
- After-sales Service Provided: Online Support Or Dispatch Engineer
- Voltage: 220V/380V
- Weight: 1200KG
- Filling Range: 200g-1000g
- Speed: 15 Bags/min
- Highlight: **Automatic chemical powder packing machine, chemical powder packing machine 15 Bags / Min, 380V granule pouch packing machine**



More Images



FJ-300GD PLC Controlled Automatic Chemical Liquid powder granule Bag Packing Machine

Major characteristics

This machine mainly consists of fully automatically packing machine and auger. It is a good choice for pesticide powder, coffee powder, spices, additives and other powder materials. It is also good choice for liquid, jam material filling ,as juice, catsup, béchamel, chili sauce, liquid soap ,detergent and so on.

1. Machinery handbag -printing -bag opening filling -jolt air pressed -sealing - shaping -embossing -finished product outputting
2. Touch screen control panels , no operator's intervention ,fully automatically control ,PLC executive machinery ,and movement reliability , easy to operate ,no environment pollution .
3. The mainframe is adjusted by exported frequency conversion .
4. The packaging bags are good looking qualified , which it has printed and heat-sealed for twice .
5. The machine is designed with unitary service position ,so the mouth of the bottle is unruffled .
6. The part which contact with filling materials are made of stainless steels . It is clean , anti-corrosion ,durability .
7. It is provided with automatic metering machine according to the requirement of the filling materials , automatic screw filling machine ,intelligent compound balance and other products ,which are suitable for metering automatically to compound a line.

Technical parameters

Model	FJ-300	FJ-210
Packing size	200*300-300*450mm	100*150-210*320mm
Filling Range	500g-1000g	100g-500g
Packing Speed	600-900bags/hour	600-900 bags/hour
Power supply	5KW	4KW
Machine dimension(L*W*H)	3000mm*2300mm*2200mm	2700mm*2000mm*2200mm
Machinery station	Eight	
Packing materials	Stand up bag,four sides sealing bag,three size sealing bag	
Machine weight	About 900kg	
Pneumatic air source	0.6MPa clean and stable air source	





Partial Introduce:



work flow diagram

1. manually put the bag in the feeding part of the main machine, machine will automatic suck the bag.
2. Automatic bag opening (opening the bag up and down at the same time and blowing the bag on the top to assist open the bag)
3. The rough filling by compressing filling head, the dust removing port is installed in the filling position, the dust generated by the filling is sucked, and the cylinder under the filling head is blocked.
4. Accurate filling, first weigh the rough filled material, determine the small amount, then add it, and add the side to weigh until

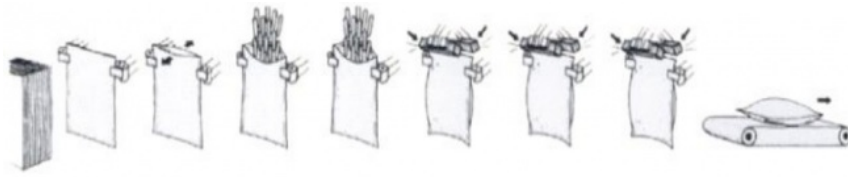
the set filling amount is stopped. This position also installs the vacuum port irrigation. The loaded material enters the flat position of the bag opening, and the dust suction port is installed above the bag

5. Enter the heat seal sealing position, and then vent and seal before sealing

6. Enter the sealing cold press shaping position (can be equipped with steel printing code)

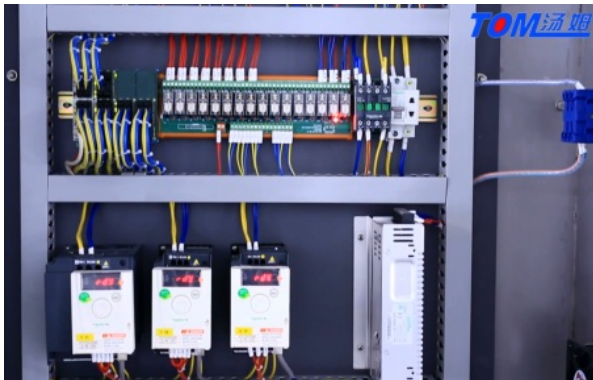
7. Delivery of the machine through the belt

8. The belt at the exit of the machine will be packaged and delivered out, then manual packed to carton. Feeding Bags → clip Bags → Openings → Filling 1 → Filling 2 → Heat Sealing 1 → Heat Sealing 2 → Shaping → Output



Electrical parts:

The electrical part are in top side of machine, can prevent water and material inside it, safety and environmental.



Packaging & shipping:



warehouse for finished machine:



Loading picture:



Company Overview--Jiangsu Tom Group



Tom "The Little White House"

Jiangsu Tom Group is an enterprise specializing in the production of pesticide / veterinary medicine, fertilizer and chemical intelligent equipment. The factory covers an area of 150 acres and has a construction area of 120,558 square meters. It has 710 employees, 2 doctoral students, 30 master students, and 358 undergraduates. It has obtained ISO9001 quality system Certification, ISO14001 Environmental Management System Certification, OHSAS18001 Occupational Health and Safety System Certification, CE Certification, Jiangsu Province Specialized Specialized New "Little Giant" Enterprise, Changzhou Specialized Specialized New Small and Medium Enterprise, 125 National Utility Patents and 26 National Inventions patent. Over the past 24 years, after the hard work of Tom people, Tom Group has continued to innovate and develop, keeping pace with the times, providing generations of advanced intelligent packaging equipment for more than 3,300 pesticide / veterinary medicine, fertilizer and chemical companies, and building Industry 4.0 intelligent factories for customers; Provide automated three-dimensional warehouse; create smart factory production data acquisition and execution system (MES) for customers.

TOM 汤姆 Jiangsu TOM Intelligent Equipment Co., Ltd.,

+86 13306111001 tech@cn-tom.com tom-packs.com

No.99, Rulin Town, Jintan District, Changzhou City, Jiangsu Province, China.