



## Chemical Packaging Machine LP-1A Small Bottle Automatic Bottle Unscrambler

Our Product Introduction

for more products please visit us on tom-packs.com

### Basic Information

- Place of Origin: China
- Brand Name: TOM
- Certification: ISO9001:2000, ISO14001, OHSAS18001, CE, CO
- Model Number: LP-1A
- Minimum Order Quantity: 1 set
- Price: Negotiable
- Packaging Details: Sea Worthy Packing
- Delivery Time: 40 working days for single machine
- Payment Terms: T/T, L/C
- Supply Ability: 10 sets per month



### Product Specification

- Capacity: 6000bph For 100ml
- After-sales Service Provided: Engineers Available To Service Machinery Overseas
- Voltage: 220V/380V
- Suitable Bottle: 50ml-200ml Round Bottle
- Automatic Grade: Automatic
- Warranty: More Than 5 Years
- Highlight: **Small Bottle Chemical Packaging Machine**



## Chemical Packaging Machine LP-1A Small Bottle Automatic Bottle Unscrambler

### Major characteristics:

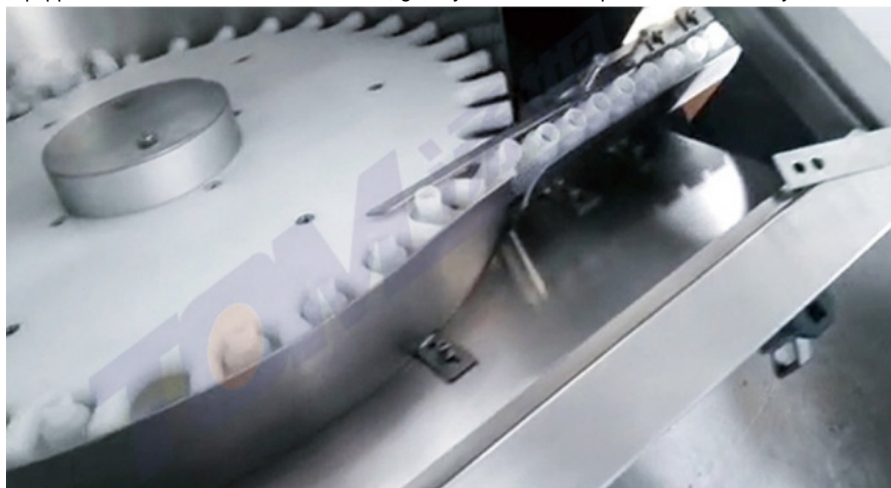
This machine equipped with two stepless speed regulating motors, one is used for bottle elevator, the other one is used for adjust the speed of working star, that is means the star's turn speed is faster, the outlet unscrambled bottle speed is faster. There's a sensor (AUTONICS) to detect whether the conveyor has bottle blocking, if bottle blocked, then the working star will stop turn automatically, if detect bottle insufficient, the star will work again. This machine suitable for daily chemical, Pharmaceuticals and foodstuff industries.

### Technical Parameter:

No.	Items	Performance
01	Capacity	≤150 bottles/minute
02	Bottle diameter	Φ30mm~Φ60mm
03	Bottle height	50mm~150mm
04	Power supply	AC 220V, 50Hz, single phase
05	Power	1.1 Kw
06	Machine dimension (L ×W×H)	2200mm×1500mm×1200mm
07	Machine weight	About 300 Kg

### Machine details:

This machine is specially designed for small bottles from 10ml to 150ml, Easy operation, simple maintenance and reliable running. This machine is equipped with outlet bottle quantitative testing and overload protection device, noise <70dB, the main material of this machine are all use SS304, easy to clean and sterilize. Using automatic reverse bottle rejection principle, equipped with bottle accumulation device, greatly increased the production efficiency. The bottle part use start wheel:

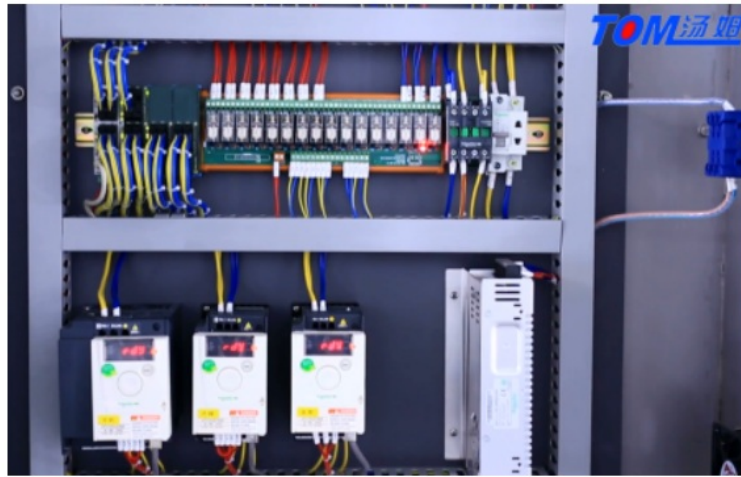


Big volume Bottle hopper can effective reduce the times for putting bottle:



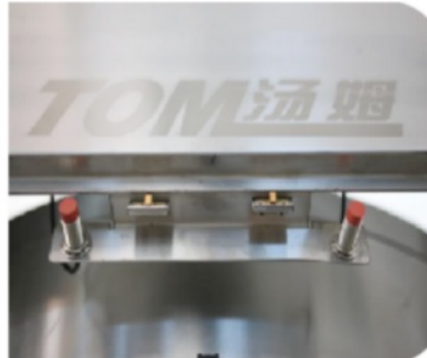
### Electrical parts:

The electrical part are in top side of machine, can prevent water and material inside it, safety and environmental.



#### **Safety door:**

All doors are equipped with photoelectric induction, emergency door opening, machine shutdown alarm to ensure personnel safety.



#### **Packaging & Shipping**

1. the machine is packed by non-fumigation wooden case, and for keeping the wooden case more secure, we inserted the iron support inside wooden case, makes it suitable for long-term sea delivery.



Ware house for finished packed machines:





Loading machines into container:  
We have a professional logistics team responsible for shipping



**Company Overview--Jiangsu Tom Group**





Company real scene



Company covers an area of 150 m<sup>2</sup> office building



New factory processing center



Old factory processing center



Assembly workshop



After-sales service big data service center



**Jiangsu TOM Intelligent Equipment Co., Ltd.,**

+86 13306111001

tech@cn-tom.com

tom-packs.com

No.99, Rulin Town, Jintan District, Changzhou City, Jiangsu Province, China.