

## Small Capacity Piston Monoblock Filler Capper Machine 100ml-1L 1200BPH

Our Product Introduction

for more products please visit us on [tom-packs.com](http://tom-packs.com)

### Basic Information

- Place of Origin: China
- Brand Name: TOM
- Certification: CE, ISO, CO
- Model Number: GXY-4-1
- Minimum Order Quantity: 1 Set
- Price: Negotiable
- Packaging Details: Sea Worthy Packing
- Delivery Time: 30 working days
- Payment Terms: L/C, T/T
- Supply Ability: 6 sets per month



### Product Specification

- Filling Range: 100ml-1L
- Warranted: 12 Months
- Capacity: 1200bph
- Accuracy: +/-0.5% For 500ml
- Condition: New
- Weight: 1000kg
- Filling Product: Liquid
- Materials: SUS304
- Highlight: **Monoblock Filler Capper Machine Piston,  
100ml Monoblock Filler Capper Machine,  
1200BPH monoblock machine**



## GXY-4-1 Fully Automatic Small Capacity Piston Filling And Capping For 100ml-1L

### Major characteristics:

This machine is newly developed filling and capping machine. It is applied to many kinds and specifications filling packing equipment. Automatic controlled by PLC, touch screen controlled panel, easy operating, and convenient maintenance; it is idea equipment for low yield requirement.

The tightening system has functions of automatic caps sort-selecting, caps tightening. All the parts which contacting with the filling material are made of high quantity stainless steel, the surface has been polished, non pollution, the machine is applied to GMP standard requirement.

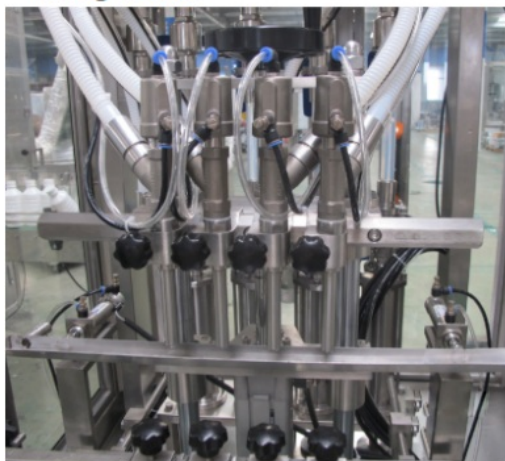
### Technical parameters:

Power supply:	AC 220V 50 Hz or according client requirements
Power	2kw
Pneumatic source	0.6MPa stable compressed air
Minimum diameter of the bottle mouth	Φ40mm
Filling range	100-1000ml
Production capacity	About 1000bottles/hour
Weight	650kg
Machine dimension	2000mm×1100mm×1900mm

### Partial Introduce:

#### Filling part details:

Filling nozzle



Piston cylinder



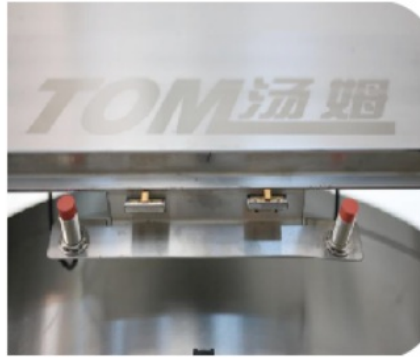
#### Capping Part:



The start wheel are special designed following customer's bottle diameter which can make sure the capping stable and accuracy, won't hurt the bottle.

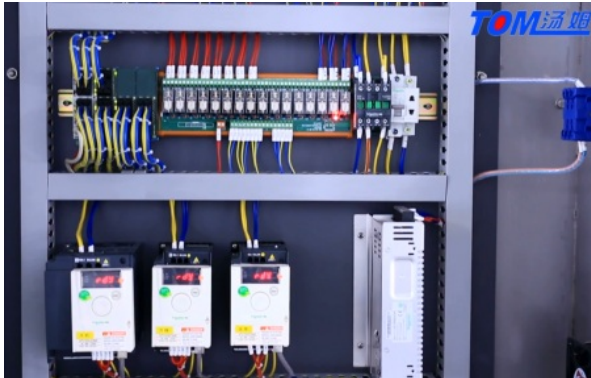
#### Safety door

All doors are equipped with photoelectric induction, emergency door opening, machine shutdown alarm to ensure personnel safety.



#### Electrical parts:

The electrical part are in top side of machine, can prevent water and material inside it, safety and environmental.



#### Packaging & shipping:



warehouse for finished machine:





Loading picture:





**Tom "The Little White House"**

Jiangsu Tom Group is an enterprise specializing in the production of pesticide / veterinary medicine, fertilizer and chemical intelligent equipment. The factory covers an area of 150 acres and has a construction area of 120,558 square meters. It has 710 employees, 2 doctoral students, 30 master students, and 358 undergraduates. It has obtained ISO9001 quality system. Certification, ISO14001 Environmental Management System Certification, OHSAS18001 Occupational Health and Safety System Certification, CE Certification, Jiangsu Province Specialized Specialized New "Little Giant" Enterprise, Changzhou Specialized Specialized New Small and Medium Enterprise, 125 National Utility Patents and 26 National Inventions patent. Over the past 24 years, after the hard work of Tom people, Tom Group has continued to innovate and develop, keeping pace with the times, providing generations of advanced intelligent packaging equipment for more than 3,300 pesticide / veterinary medicine, fertilizer and chemical companies, and building Industry 4.0 intelligent factories for customers; Provide automated three-dimensional warehouse; create smart factory production data acquisition and execution system (MES) for customers.

**TOM 汤姆** Jiangsu TOM Intelligent Equipment Co., Ltd.,

+86 13306111001    tech@cn-tom.com    tom-packs.com

No.99, Rulin Town, Jintan District, Changzhou City, Jiangsu Province, China.