

100ml-1L Piston Monoblock Filling And Capping Machine 5000BPH

Our Product Introduction

for more products please visit us on tom-packs.com

Basic Information

- Place of Origin: China
- Brand Name: TOM
- Certification: CE, ISO, CO
- Model Number: GXXC-24-8
- Minimum Order Quantity: 1 Set
- Price: Negotiable
- Packaging Details: Sea Worthy Packing
- Delivery Time: 40 working days
- Payment Terms: L/C, T/T
- Supply Ability: 3 sets per month



Product Specification

- Model: GXXC-24-8
- Filling Range: 100ml-1L
- Filling Head: 24 Heads
- Capping Head: 8 Heads
- Warranted: One Year
- Capacity: 5000bph
- Accuracy: +/-0.5% For 500ml
- Materials: SUS304
- Highlight: Piston monoblock filling and capping machine,
1L monoblock filling and capping machine,
5000BPH monoblock bottling machine



GXXC-24-8 Fully Automatic Piston Filling and Capping for 100ml-1L

Major characteristics:

1. This machine is newly developed filling and capping machine, with strong automation and large capacity. It is automatic controlled by PLC, touch screen controlled panel. It is an ideal integrate of mechanical, electrical, light, gas. The machine has exceeded the top level of the similar type machine.
2. This machine is integration of mechanics and electrics, filling specifications can easily be changed by altering parameter on touch screen control panel. Filling volume of each packing specifications, so that it can save the second adjustment.
3. During the machine cycle, the key parts are protected by integration of mechanics and electrics. If there is anything abnormal, it will automatically stop and alarm, then the touch screen will hint the abnormal part where it is.
4. Based on design if water-proof and pneumatic, so there is no pollution.

Technical parameters:

Dimension	3500mm×2500mm×2300mm
Filling Head	24
Capping Head	8
Suitable bottle diameter	Φ60mm-Φ145mm(can customize)
Height	80mm-380mm(can customize)
Packing specification	100ML-1000ML
Speed	5000BPH(for 500ml)
Filling error	100g<±0.5g
Pneumatic air source	0.65MPa clean and stable air source
Power supply	AC380V 50HZ
Power	7.5 kw

Partial Introduce:

bottle delivery and operation

A;it use of one modular design,bottle-in use screw and photoelectric sensor protection design, if blocking the bottle phenomenon happened, photoelectric sensor start, host machine alarm and shutdown, man-machine interface feedback;

B; bottle-in - filling - transition - capping - bottle-out, are modular design, easy to replace;

C mold with ABS oil nylon material, effectively prevent the bottle damage.

Filling part



A:it adopts piston filling;

B:body clamp fast structure, the overall disassembly and replacement parts more convenient.

Cap supplier part

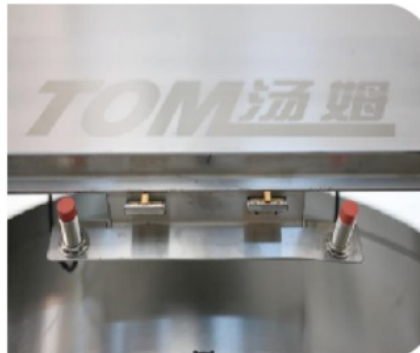


A; cap sorter use photoelectric sorting method to ensure that no anti-cap, no clogging.

B; in the conveyor track set up after the photoelectric detection device to ensure smooth operation.

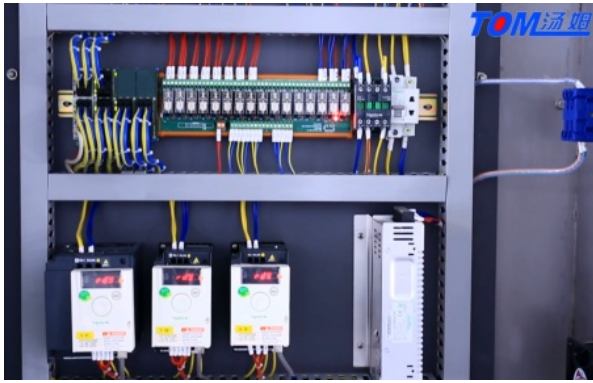
Safety door

All doors are equipped with photoelectric induction, emergency door opening, machine shutdown alarm to ensure personnel safety.



Electrical parts:

The electrical part are in top side of machine, can prevent water and material inside it, safety and environmental.



Packaging & shipping:



warehouse for finished machine:



Loading picture:



Company Overview--Jiangsu Tom Group



Tom "The Little White House"

Jiangsu Tom Group is an enterprise specializing in the production of pesticide / veterinary medicine, fertilizer and chemical intelligent equipment. The factory covers an area of 150 acres and has a construction area of 120,558 square meters. It has 710 employees, 2 doctoral students, 30 master students, and 358 undergraduates. It has obtained ISO9001 quality system. Certification, ISO14001 Environmental Management System Certification, OHSAS18001 Occupational Health and Safety System Certification, CE Certification, Jiangsu Province Specialized Specialized New "Little Giant" Enterprise, Changzhou Specialized Specialized New Small and Medium Enterprise, 125 National Utility Patents and 26 National Inventions patent. Over the past 24 years, after the hard work of Tom people, Tom Group has continued to innovate and develop, keeping pace with the times, providing generations of advanced intelligent packaging equipment for more than 3,300 pesticide / veterinary medicine, fertilizer and chemical companies, and building Industry 4.0 intelligent factories for customers; Provide automated three-dimensional warehouse; create smart factory production data acquisition and execution system (MES) for customers.

