

## High Speed Monoblock Filler Capper Machine 100ml-1L 12 Heads

Our Product Introduction

for more products please visit us on [tom-packs.com](http://tom-packs.com)

### Basic Information

- Place of Origin: China
- Brand Name: TOM
- Certification: CE, ISO,CO
- Model Number: GXXC-12-5
- Minimum Order Quantity: 1 Set
- Price: Negotiable
- Packaging Details: Sea Worthy Packing
- Delivery Time: 60 working days
- Payment Terms: L/C, T/T
- Supply Ability: 2 sets per month



### Product Specification

- Filling Type: By Weight
- Model: GXXC-12-5
- Weight: 3000KG
- Filling Range: 100ml-1L
- Material: SUS 304
- Filling Head: 12 Heads
- Capping Head: 5 Heads
- Warranted: One Year
- Highlight: **High Speed Monoblock Filler Capper Machine, Monoblock Filler Capper Machine 100ml, 12 Heads monoblock bottle filling machine**



## GXXC-12-5 Fully Automatic PLC Controlled High Speed Monoblock Filler Capper Machine

### Major characteristics:

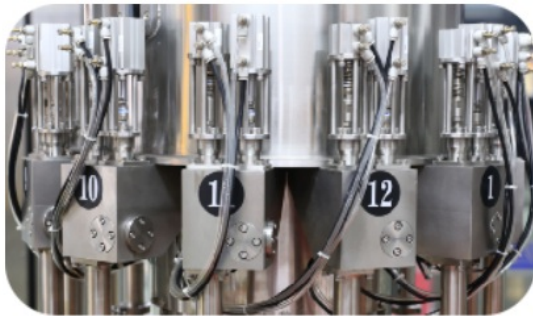
1. Adopting the most advanced weighing filling method in the world, equipped with high-precision sensors such as METTLER TOLEDO to realize dynamic online weighing technology with high measurement accuracy and not affected by various properties of materials (foam, impurities, temperature, density, etc.) .
2. Screw has anti-squeeze bottle and block bottle alarm function
3. This machine adopts programmable controller (PLC) for control, touch screen operation, easy operation, high production efficiency and wide application range.

### Technical parameters:

Dimension	2400mm*1530mm*2700mm
Filling Head	12
Capping Head	5
Suitable bottle diameter	Φ60mm-Φ145mm(can customize)
Height	80mm-380mm(can customize)
Packing specification	100g-1000g
Speed	≥6500BPH(test with 100ml water)
Filling error	100g<±0.5g
Pneumatic air source	0.65MPa clean and stable air source
Power supply	AC380V 50HZ
Power	6.5 kw

### Partial Introduce:

1. Adopts fast and slow double speed filling:



2. Liquid level detection used for the normal working liquid level control, high and low liquid level detection and sound and light alarm devices are added to prevent abnormal liquid level;

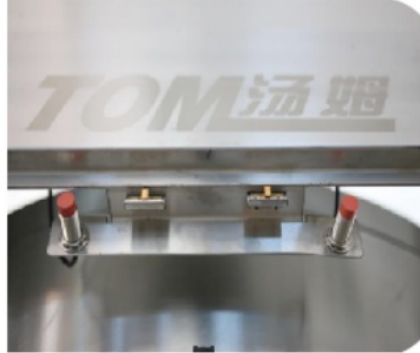


3. Fast switching design, greatly reducing the tuning time (no need any tool to change the moulds, only take a few minutes to change it).



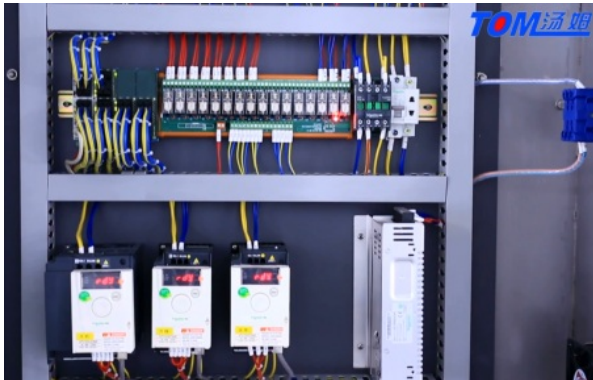
#### Safety door

All doors are equipped with photoelectric induction, emergency door opening, machine shutdown alarm to ensure personnel safety.



#### Electrical parts:

The electrical part are in top side of machine, can prevent water and material inside it, safety and environmental.



#### Packaging & shipping:



warehouse for finished machine:



Loading picture:



## Company Overview--Jiangsu Tom Group



### Tom "The Little White House"

Jiangsu Tom Group is an enterprise specializing in the production of pesticide / veterinary medicine, fertilizer and chemical intelligent equipment. The factory covers an area of 150 acres and has a construction area of 120,558 square meters. It has 710 employees, 2 doctoral students, 30 master students, and 358 undergraduates. It has obtained ISO9001 quality system Certification, ISO14001 Environmental Management System Certification, OHSAS18001 Occupational Health and Safety System Certification, CE Certification, Jiangsu Province Specialized Specialized New "Little Giant" Enterprise, Changzhou Specialized Specialized New Small and Medium Enterprise, 125 National Utility Patents and 26 National Inventions patent. Over the past 24 years, after the hard work of Tom people, Tom Group has continued to innovate and develop, keeping pace with the times, providing generations of advanced intelligent packaging equipment for more than 3,300 pesticide / veterinary medicine, fertilizer and chemical companies, and building Industry 4.0 intelligent factories for customers; Provide automated three-dimensional warehouse; create smart factory production data acquisition and execution system (MES) for customers.

**TOM 汤姆** Jiangsu TOM Intelligent Equipment Co., Ltd.,

+86 13306111001    tech@cn-tom.com    tom-packs.com

No.99, Rulin Town, Jintan District, Changzhou City, Jiangsu Province, China.