

2 In 1 Monoblock Liquid Filling Machine 3000-5000BPH 50-1000ml

Our Product Introduction

for more products please visit us on tom-packs.com

Basic Information

- Place of Origin: China
- Brand Name: TOM
- Certification: CE, ISO, CO
- Model Number: GXY-10XC-2X
- Minimum Order Quantity: 1 Set
- Price: Negotiable
- Packaging Details: Plywood case
- Delivery Time: 30 working days
- Payment Terms: L/C, T/T, Western Union
- Supply Ability: 15 sets per month

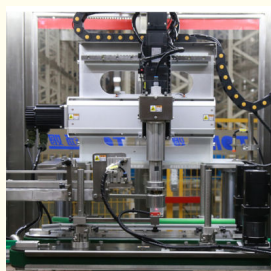
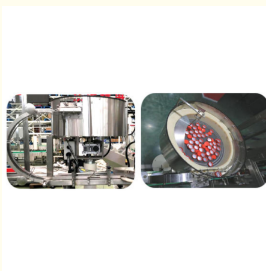


Product Specification

- Material: Stainless Steel 304
- Filling Volume: 50-1000ml
- Speed: 3000-5000 Bottle Per Hour
- Filling Type: By Piston/Volume
- Application: Both Viscosity And No Viscosity Liquid
- Model: GZZH-10-2GS
- Control: By PLC And Touch Screen Control Panel
- Highlight: 2 In 1 monoblock liquid filling machine, 3000BPH monoblock liquid filling machine, 1000ml monoblock filling equipment



More Images



GZZH-10-2GS Fully Automatic Intelligent Filling And Capping 2 In 1 Machine

Major characteristics

This machine is our newly developed technology machine, with 10 heads linear piston filling machine integrates 2 heads following type , controlled by PLC and touch screen control panel. Accurate measuring, advanced structure, stable operation, and low noise, widely adjusting range and fast filling and capping speed.

Filling part features:

1. Adopts advanced mechanical and electrical integration technology. Any filling specification can easily be done by changing parameters in touch screen. Not only the filling volume of 10 filling heads can be changed substantially, but also each filling head volume can be changed finely.
2. With PLC technologies, which make operation of machine steadier, convenient, the human machine interface is friendlier. Photoelectric sensor, approaching switch and other elements are using international famous brand. No bottle no filling, the machine can stop automatically and alarm when bottles get blocked.
3. Various sealing rings used can meet different characteristics of products requirements.
4. Designing and production meet GMP. Easily dismantle, clean and maintain. The parts which contact filling products are made of high quality stainless steel. The machine is safe, environmental, sanitary, adapting to various kinds of working places.
5. This machine has the function of "automatic cleaning system" in PLC, can be operated by touch screen.

Capping part features:

The capping part is a following-type capping, with PLC and touch screen automation control, with accurate measurement, advanced structure, stable operation, low noise, wide adjustment range, fast speed, easy to change specifications, all parts are use high-quality stainless steel, is the ideal packaging equipment for various industries. PLC has a memory function, and can simultaneously memorize the combination of five doses and operating parameters, mechanical structure is simple, large space, greatly facilitate the replacement of the specifications of the adjustment

Technical parameters

No.	Items	Performance
01	Power supply	AC220V; 50Hz (may customized)
02	Power	9.0 Kw
03	Air source	0.55Mpa-0.6Mpa clean and stable compressed air
04	Bottle diameter (minimum)	Φ40mm (may customized)
05	Bottle diameter	Φ40mm Φ100mm (may customized)
06	Bottle height	60mm 230mm (may customized)
07	Filling product	Edible Oil, Jam and some other viscosity liquid
08	Filling range	50ml-1000ml
09	Number of filling nozzles	10
10	Number of capping heads	2
11	Production capacity	4000 bph;
12	Machine weight	about 3000Kg
13	Machine dimension (L×W×H)	3520mm×1400mm×2500mm

1. Filling nozzle:

- (1) Specification adjustment can be achieved without tool;
- (2) The position of adjustment are all carved scale or equipped with digital display, easy to adjust;
- (3) The filling pipes are all adopt fast loading clamp, easy to dismantle and maintain.

**2. Part of filling hopper:**

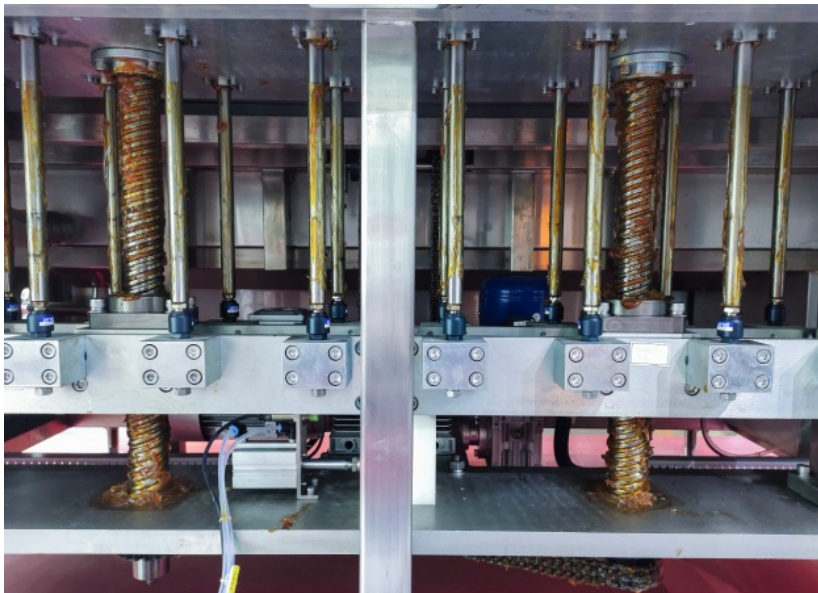
- (1) The connector is all adopt fast loading clamp type, easily dismantle, clean and maintain.

- (2) All pipe joints are installed a drip tight gasket, for avoiding liquid drip, ensured a long-term service life and won't penetrate.
- (3) Designing and production meet GMP. Easily dismantle, clean and maintain. The parts which contact filling products are made of high quality stainless steel 304.



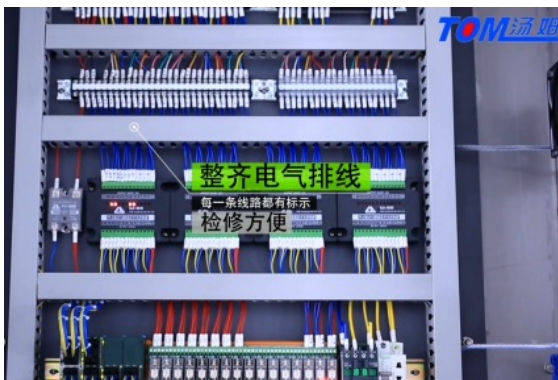
3. Energy part

1. The energy part of this machine adopts double screw power train; ensure the piston cylinder stable working
- Servo system (variable speed motor + encoder) control or direct control of servo motor ensures the adjustability of measurement.



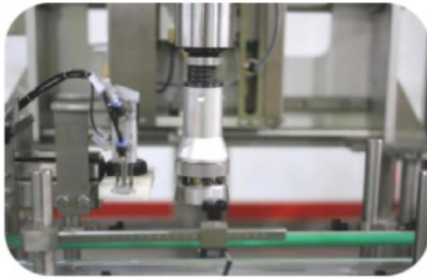
Electrical parts:

The electrical part are in top side of machine, can prevent water and material inside it, safety and environmental.

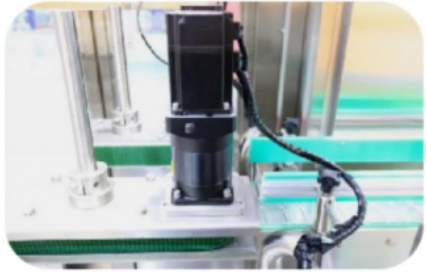
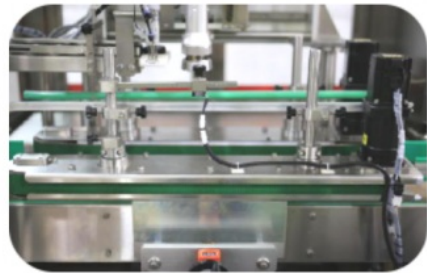


Descriptions of capping parts:

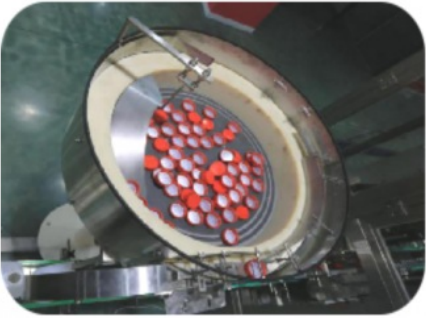
High-precision screw cap, precise grip, reliable screw cap, stainless steel, professional surface treatment, three claws in a triangular shape, internal wear-resistant tendon strip to prevent metal from directly contacting the lid , reduce the wear of the cap.



The bottle is clamped firmly by belt during the capping process, and at the same time, it plays the Z-axis direction. The servo motor controls the bottle clamping speed and keeps pace with the capping motor, so that the gripper can precisely match the bottle mouth.



The capping device adopts the principle of centrifugal movement to make the cap inside enter the track and perform the front and back cap treatment. The photoelectric detect and the compressed air blow, makes the back cap return into the cap sorter bowl, and the positive cap enters the cap chute, cap sorting speed can be adjusted by frequency conversion.



Applicable bottle type



This machine is linear piston type filling machine, with 304 stainless steel environmental protection closed frame, tempered glass door stainless steel edge protection (not frameless ordinary glass), the top left with suction port.



The Photo Of Our Company



TOM 汤姆 Jiangsu TOM Intelligent Equipment Co., Ltd.,

+86 13306111001 tech@cn-tom.com tom-packs.com

No.99, Rulin Town, Jintan District, Changzhou City, Jiangsu Province, China.