

## 500g-1000g Chemical Liquid Filling Machine 20-25 Bags/Min

Our Product Introduction

for more products please visit us on tom-packs.com

### Basic Information

- Place of Origin: China
- Brand Name: TOM
- Certification: CE, ISO, CO
- Model Number: FJ-300GD
- Minimum Order Quantity: 1 Set
- Price: Negotiable
- Packaging Details: Sea Worthy Packing
- Delivery Time: 50 working days
- Payment Terms: L/C, T/T
- Supply Ability: 10 sets per month



### Product Specification

- Filling Type: By Weight And Screw
- Application: For Liquid
- Model: FJ-300GD
- After-sales Service Provided: Online Support
- Voltage: 220V/380V
- Weight: 1200KG
- Filling Range: 500g-1000g
- Speed: 20-25 Bags/min
- Highlight: 1000g chemical liquid filling machine,  
500g chemical liquid filling machine,  
25 Bags/Min chemical filling machine



# FJ-300GD PLC Controlled Automatic Chemical Liquid Bag Packing Machine

## Major characteristics

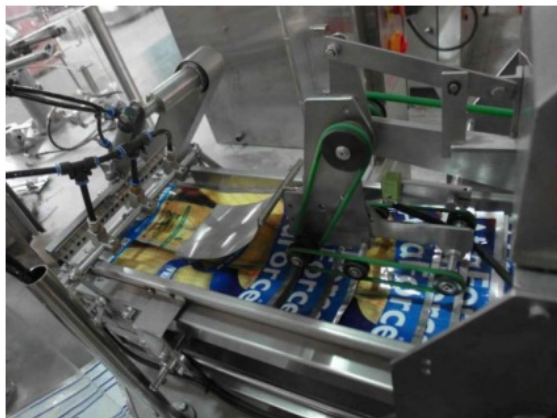
- 1, Easy to operate, use imported PLC control, with touch screen man-machine interface control system;
- 2, Frequency control, the use of frequency control device, within the provisions of the speed can be freely adjusted;
- 3, Automatic detection function, if the bag not open or opened not complete, no feeding, no heat sealing, the bag can be reused, do not waste material, saving production costs for the user;
- 4, Safety device, when the working pressure is not normal or heating pipe failure, will alarm;
- 5, The bag sorter can storage more bags, have a lower requirement for the finished bag's quality, Sub-bags, feeding bags with high rate;
- 6, Pressurized air, the windpipe into the bag and then clip bag mouth, and then blowing air, so that the bottom of the stand-up bag to open completely, to avoid the bag open at the bottom incomplete lead to material overflow
- 7, Adjust the width of the bag using motor control, press and hold the control button to adjust the width of each machine folder, easy to operate, save time
- 8, Part use imported engineering plastic bearings, no refueling, reduce the pollution of materials

## Technical parameters

Model	FJ-300	FJ-210
Packing size	200*300-300*450mm	100*150-210*320mm
Filling Range	500g-1000g	100g-500g
Packing Speed	600-900bags/hour	600-900 bags/hour
Power supply	5KW	4KW
Machine dimension(L*W*H)	3000mm*2300mm*2200mm	2700mm*2000mm*2200mm
Machinery station	Eight	
Packing materials	Stand up bag, four sides sealing bag, three size sealing bag	
Machine weight	About 900kg	
Pneumatic air source	0.6MPa clean and stable air source	

## Partial Introduce:

### Bag feeding part:



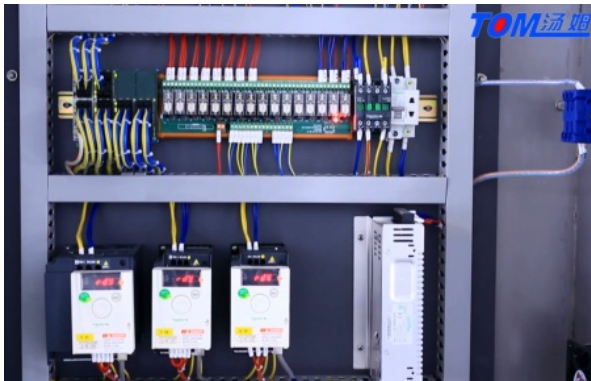
### Safety door

The machine with safety door which can keep operator safe, when open this door, the machine will stop automatically.



#### Electrical parts:

The electrical part are in top side of machine, can prevent water and material inside it, safety and environmental.



#### Packaging & shipping:



warehouse for finished machine:





Loading picture:



## Company Overview--Jiangsu Tom Group



### Tom "The Little White House"

Jiangsu Tom Group is an enterprise specializing in the production of pesticide / veterinary medicine, fertilizer and chemical intelligent equipment. The factory covers an area of 150 acres and has a construction area of 120,558 square meters. It has 710 employees, 2 doctoral students, 30 master students, and 358 undergraduates. It has obtained ISO9001 quality system. Certification, ISO14001 Environmental Management System Certification, OHSAS18001 Occupational Health and Safety System Certification, CE Certification, Jiangsu Province Specialized Specialized New "Little Giant" Enterprise, Changzhou Specialized Specialized New Small and Medium Enterprise, 125 National Utility Patents and 26 National Inventions patent. Over the past 24 years, after the hard work of Tom people, Tom Group has continued to innovate and develop, keeping pace with the times, providing generations of advanced intelligent packaging equipment for more than 3,300 pesticide / veterinary medicine, fertilizer and chemical companies, and building Industry 4.0 intelligent factories for customers; Provide automated three-dimensional warehouse; create smart factory production data acquisition and execution system (MES) for customers.



**Jiangsu TOM Intelligent Equipment Co., Ltd.,**

+86 13306111001

tech@cn-tom.com

tom-packs.com

No.99, Rulin Town, Jintan District, Changzhou City, Jiangsu Province, China.