

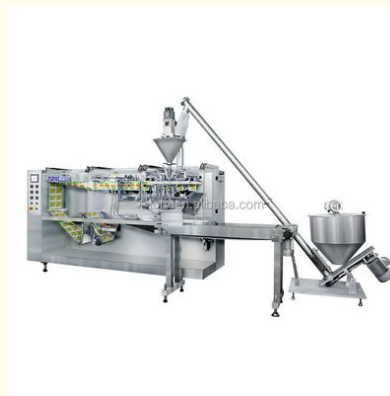
2-100g Fully Automatic PLC Controlled Horizontal Pouch Packing Machine

Our Product Introduction

for more products please visit us on tom-packs.com

Basic Information

- Place of Origin: China
- Brand Name: TOM
- Certification: CE, ISO, CO
- Model Number: FJ-140
- Minimum Order Quantity: 1 Set
- Price: Negotiable
- Packaging Details: Plywood case
- Delivery Time: 30 working days
- Payment Terms: L/C, T/T, Western Union
- Supply Ability: 30 sets per month



Product Specification

- Material: Stainless Steel 304
- Filling Volume: 2-100g
- Speed: 40-80 Bottle Per Minute
- Filling Type: By Screw Or Piston
- Application: Powder, Liquid, Granular
- Model: FJ-140
- Machine Size: 2850mm X 920mm X 2200mm
- Highlight: **PLC Controlled Horizontal Pouch Packing Machine**
, 100g Horizontal Pouch Packing Machine,
2g horizontal pouch machine



More Images



FJ-140 Fully Automatic PLC Controlled Horizontal Pouch Packing Machine

Major characteristics

1. Controlled by PLC and operated by touch screen, easy operation, high production rate, wide application range.
2. The electrical parts consist of PLC and sleepless speed governor, high control ability, high automation. Specific devices are used to avoid dislocation. No penning of bags no filling. The application of touch screen makes it more reliable and convenient in operation and friendly in human machine interface. The famous brand advanced photoelectric sensors. Print coder, and proximity switches make contributions to the perfect embodiment of mechanical & electrical integration.
3. It is characterized by fast speed and simple specification change. All the parts that touch feed directly are made of stainless steel. It is an ideal packing machine for agrochemical, pharmaceutical, foodstuff and cosmetic industries.

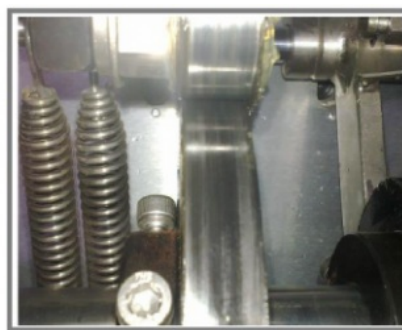
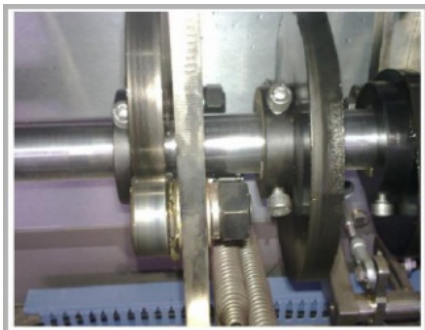
Technical parameters

No.	Items	Performance
01	Power supply	380V±10%
02	Power	3.5kw
03	Air source	0.6Mpa clean and stable compressed air
04	Bag size making	Max: 140mm (Width) x 180mm (Height) Min: 60mm (Width) x 70mm (Height)
05	Suitable film roll	max external diameter: Φ380mm Inner diameter: Φ70mm-Φ80mm
06	Filling product	Powder, liquid, granular
07	Filling range	2-100g
08	Filling error	30g±1
09	Number of filling nozzles	1 filling heads
10	Production capacity	40bags/min-80bags/min
11	Machine weight	about 880Kg
12	Machine dimension (L×W×H)	2850mm x 920mm x 2200mm

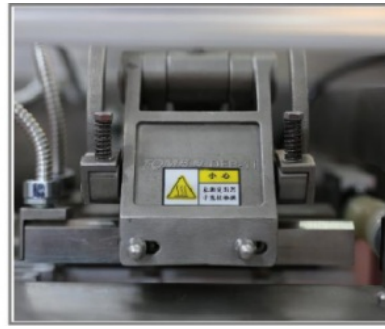
The application of high precision cam

We use 13 pcs of different specification of cams altogether on this machine, and cam is made of 38 chrome steel, which has excellent abrasion performance, rather than 45# steel which other manufacturers usually adopt. The cam is supplied by specialized manufacturer, with contact surface absolutely smooth. Only TOM use this kind cam, As the bag motion of horizontal bag feeding machine are realized by cam, so the precision of the cam can play decisive role on the running stability and usage life of the machine.

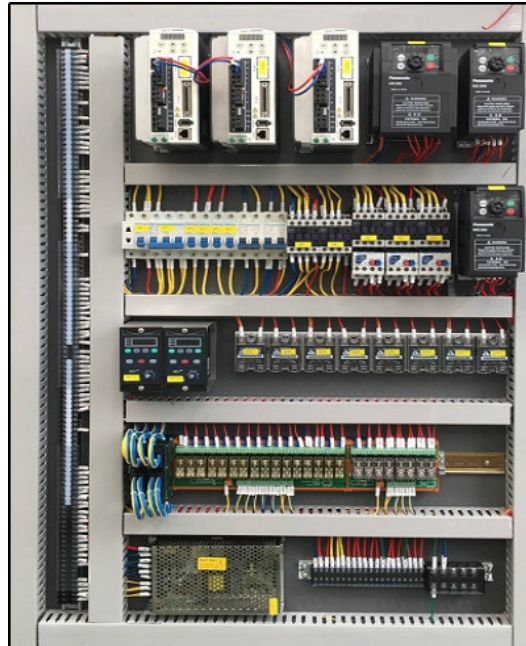
The cam of our horizontal machine is free to replace for life.



The sealing device wheel frame is all processed by stainless steel castings, which has long service life and strong firmness. The original welded parts are easily deformed and easily broken.



The main components of this machine are all international famous brands. The human-machine interface and microcomputer controller (PLC) adopt the Japanese Panasonic brand. The operation is simple and the operation is reliable. The servo control system adopts Taiwan TECO and has been used by the company for nearly 10 years. Has considerable experience, stable quality, wide application environment and low maintenance rate. The main power inverter adopts the French Schneider brand



An oil-water separator is installed in front of the intake main pipe. When the pressure is too high or too low, the host automatically alarms and stops the machine; (All the above alarms are touch screen display and sound and light alarms at the same time)



The Photo Of Our Company



TOM 汤姆 Jiangsu TOM Intelligent Equipment Co., Ltd.,

+86 13306111001

tech@cn-tom.com

tom-packs.com

No.99, Rulin Town, Jintan District, Changzhou City, Jiangsu Province, China.